

Руководство **по монтажу**

Каминные топки Eck-Kamin

©2020

BRUNNER[®]
made in germany.

СОДЕРЖАНИЕ

1	ОПИСАНИЕ УСТРОЙСТВА.....	2
2	Объем поставки.....	3
3	Шиберная заслонка.....	5
4	Процедура монтажа.....	6
5	Чертежи и технические характеристики.....	7

Обратите внимание, что документацию по нашей продукции можно посмотреть онлайн, пройдя по ссылке:



[Общие рекомендации для специалистов по монтажу продукции Brunner](https://www.brunner.de/Allgemein/AA_Allgemeine_Hinweise_für_den_Aufbau_de.pdf)

(https://www.brunner.de/Allgemein/AA_Allgemeine_Hinweise_für_den_Aufbau_de.pdf) laden können.



1 ОПИСАНИЕ УСТРОЙСТВА

Каминные топki компании Ulrich Brunner GmbH изготавливаются и подвергаются испытаниям как самозакрывающиеся устройства согласно стандарту EN 13229. У топок с поднимающейся дверцей возможно специальное дооснащение для эксплуатации с открытой топочной камерой. Помните о том, что устройства, эксплуатируемые с открытой дверцей, могут подсоединяться только к собственной дымовой трубе. Воздух для горения подается в камеру через патрубок. Подача воздуха для горения настраивается пользователем с помощью регулировочного элемента подачи воздуха. Изделия из нашей серии каминов пригодны для эксплуатации в закрытых установках (гипокауст).

Конструктивное исполнение гипокауста должно обеспечивать как передачу тепла, так и его равномерное распространение внутри облицовки, позволяющее избежать перегрева в каком-либо определенном месте топочной камеры. Размер теплоотдающих поверхностей облицовки необходимо согласовать с габаритами теплогенератора. Указанные в технических характеристиках требуемые значения толщины изоляционного слоя для защиты прилегающих к каминной топке поверхностей здания были определены при эксплуатации камина в непрерывном режиме с открытой воздухораспределительной решеткой (испытание на безопасность согласно EN 13229 - коэффициент теплопередачи испытываемой стены - 0,7 Вт/м²К).

При необходимости следует принять соответствующие дополнительные меры (напр., предусмотреть вентиляцию с задней стороны). При встраивании электрических или электронных компонентов (блоков управления, датчиков, кабелей и т.п.), а также водопроводящих деталей обязательно учитывайте максимально допустимую температуру окружающей среды для того или иного компонента.

При монтаже закрытой установки с каминами, оборудованными поднимающейся дверцей, необходимо помнить о том, что ролики канатной направляющей обладают максимальной теплоустойчивостью в 150°C.

Кожух	Дверца	Конвекционная поверхность нагрева	Обозначение	доп. режим эксплуатации	Шибберная труба	Заслонка подогрева	Дроссельная заслонка
Стальной кожух	самозакрывающаяся	-	EN 13229 W	при номинальной нагрузке	с подключением к общему дымоходу	-	да
Стальной кожух	не самозакрывающаяся	-	EN 13229 W	при открытой дверце и номинальной нагрузке	с подключением к индивидуальному дымоходу	-	да
чугунный купол	самозакрывающаяся	металл	EN 13229 WA	хранения работы	с подключением к общему дымоходу	да	-
чугунный купол	самозакрывающаяся	керамика	EN 13229 WA	хранения работы	с подключением к общему дымоходу	да	-
-	самозакрывающаяся	модульные компоненты	EN 13229 WA	хранения работы	с подключением к общему дымоходу	-	да

2 ОБЪЕМ ПОСТАВКИ

Камин поставляется предварительно смонтированным на одноразовом поддоне. Шамотные кирпичи для топочной камеры уложены в картонную коробку, также находящуюся на поддоне. Отдельные детали для отвода печных газов по мере необходимости вкладываются в топочную камеру камина.

Элементы управления, требуемые для открытия и очистки дверцы топочной камеры, находятся внутри устройства.

Снаружи на защитную упаковку наклеена этикетка, на которой указывается точный тип поставляемого камина. Проверьте комплектность поставки! О повреждениях при транспортировке или отсутствующих деталях следует немедленно сообщить поставщику!

Расположение паспортной таблички

Паспортная (заводская) табличка устройства расположена под дверцей топочной камеры и легкоobservable в немонтированном состоянии. Точная копия паспортной таблички дополнительно приводится в документации изделия.

Обязательно сохраните её на всё время эксплуатации камина!

Угловые каминные топки, за исключением угловых архитектур-каминов, поставляются без предварительно смонтированных дымоборников. Все каминные топки из серии угловых архитектур-каминов поставляются с жёстко закреплённым стальным дымоборником; замена невозможна.

На чертежах данной серии каминов показан каждый отдельный случай монтажа чугунного кожуха горячего воздуха. При выборе кожуха или купола, отличных от представленного, обратите внимание на представленные ниже размерные эскизы кожуха/ купола.

Опция: чугунный кожух горячего воздуха

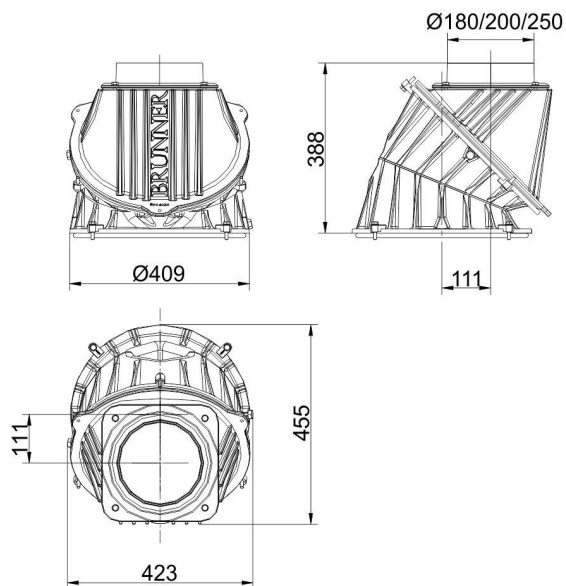


Иллюстрация 1: Кожух горячего воздуха: вертикальный отвод

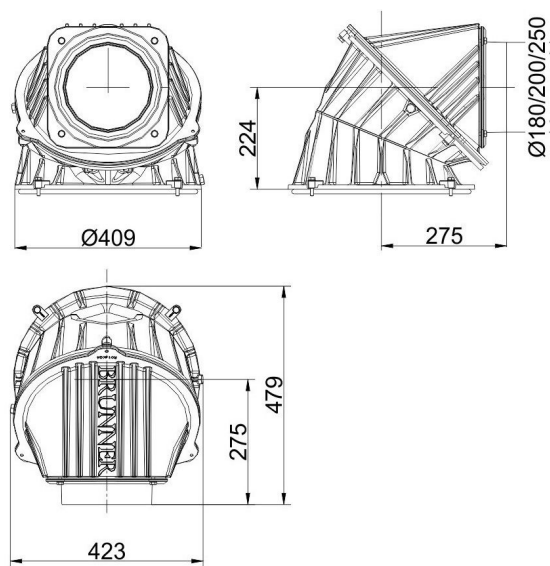


Иллюстрация 2: Кожух горячего воздуха: горизонтальный отвод

Опция: чугунный купол

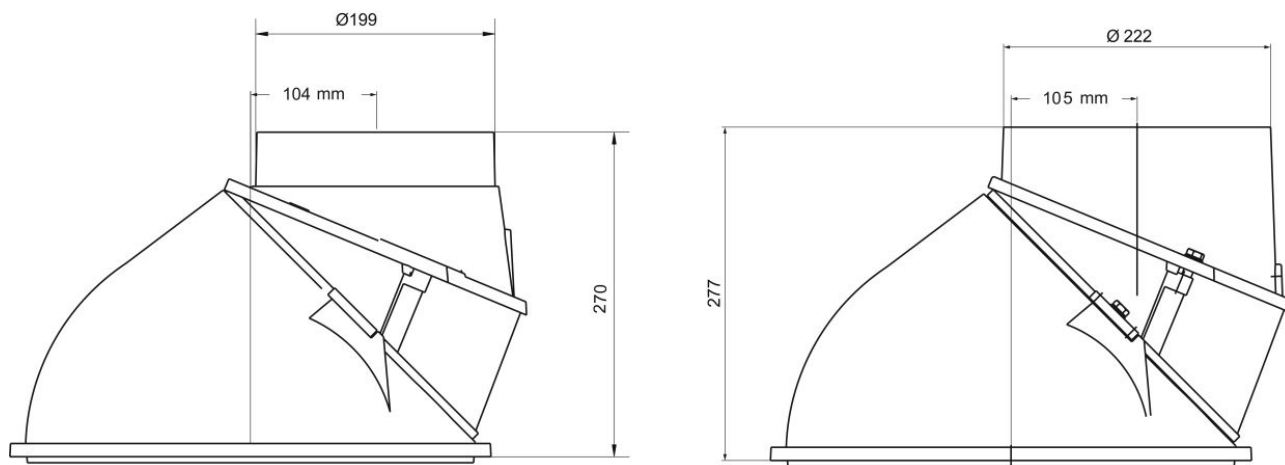


Иллюстрация 3: Чугунный купол с диаметром подсоединения 200 мм и 225 мм

Опция: керамический аккумулятор-насадка

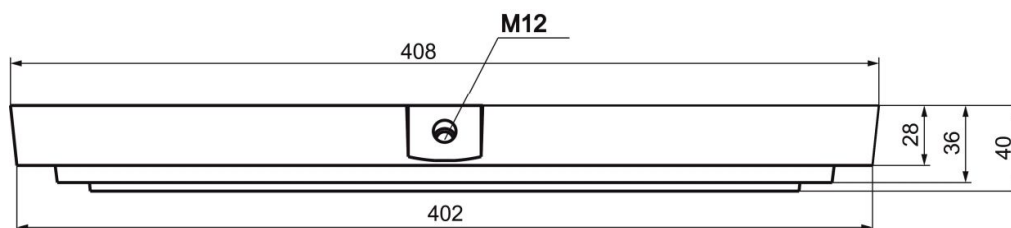


Иллюстрация 4: Дистанционное кольцо

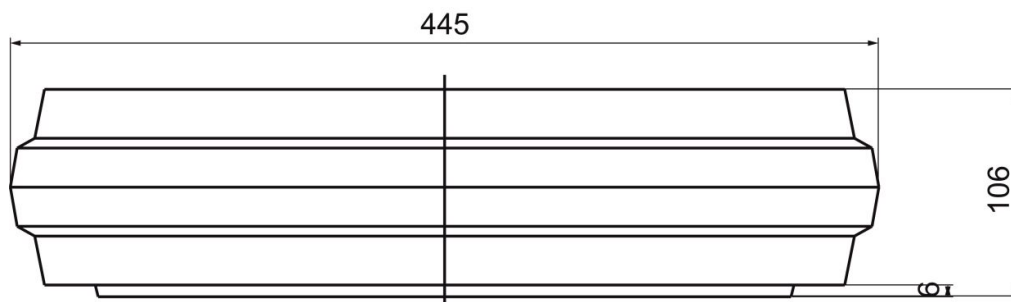


Иллюстрация 5: Модульный блок

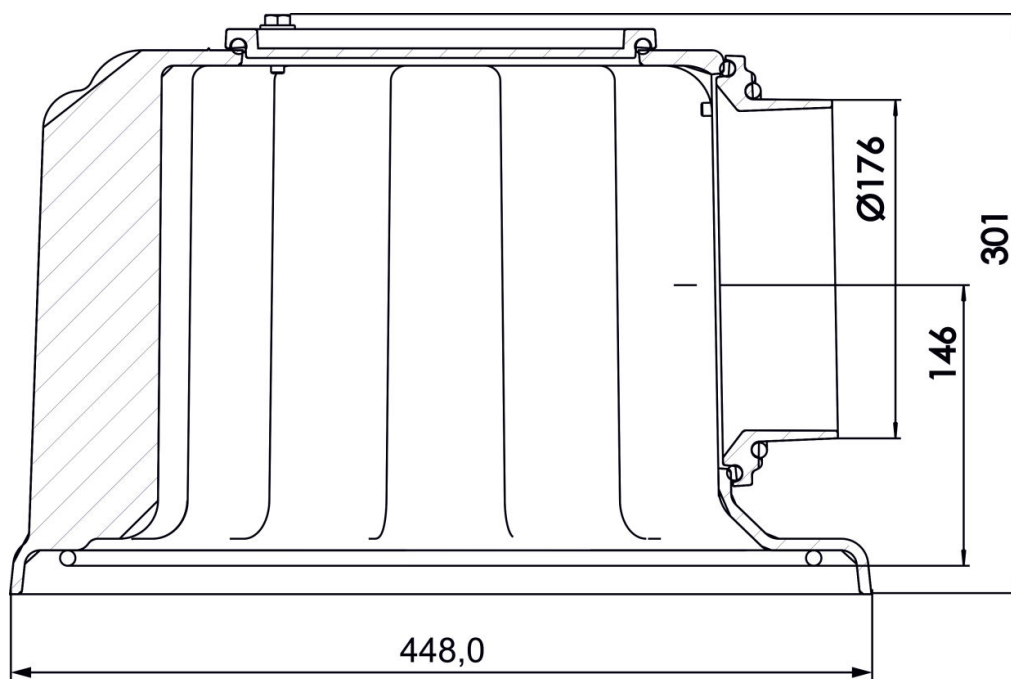


Иллюстрация 6: Чугунный накладной кожух для MAS(Ø160 / Ø180 / Ø200 мм)

3 ШИБЕРНАЯ ЗАСЛОНКА

Мы рекомендуем монтировать в соединительном элементе шиберная заслонка. Клапан устройства должен быть прост в управлении, а его положение должно распознаваться снаружи на ручьятке управления. Кроме того, данный клапан должен оставаться в выбранном положении и не закрываться самостоятельно. В дроссельном клапане необходимо предусмотреть отверстия, составляющие не менее 3 % от площади поперечного сечения, но при этом имеющие минимальный размер 20 см².

4 ПРОЦЕДУРА МОНТАЖА

ВНИМАНИЕ: Обязательно соблюдайте пожарозащитные нормативы - например, в отношении слоев теплоизоляции и размера воздухораспределительных решеток. При эксплуатации каминных топок "Архитектур" с чрезмерным расходом топлива существует опасность перегрева дымовой трубы и прилегающих к камину конструкций / предметов мебели. Это может привести к пожару!

Каминные топки "Архитектур" могут поставляться в нестандартном исполнении с боковым отводом дымовых газов. Между канатным роликом и дымоотводом необходимо проложить достаточное количество изоляционного материала для защиты канатного ролика от перегрева!

Установите аминную топку "Архитектур" вертикально на желаемое место. Разницу по высоте можно выровнять с помощью регулируемых опор. Учитывайте допустимую нагрузку на половое перекрытие. В устройствах с поднимающейся дверцей топочной камеры следует удалить боковые транспортные крепления (см. ярлыки, наклеенные по бокам).

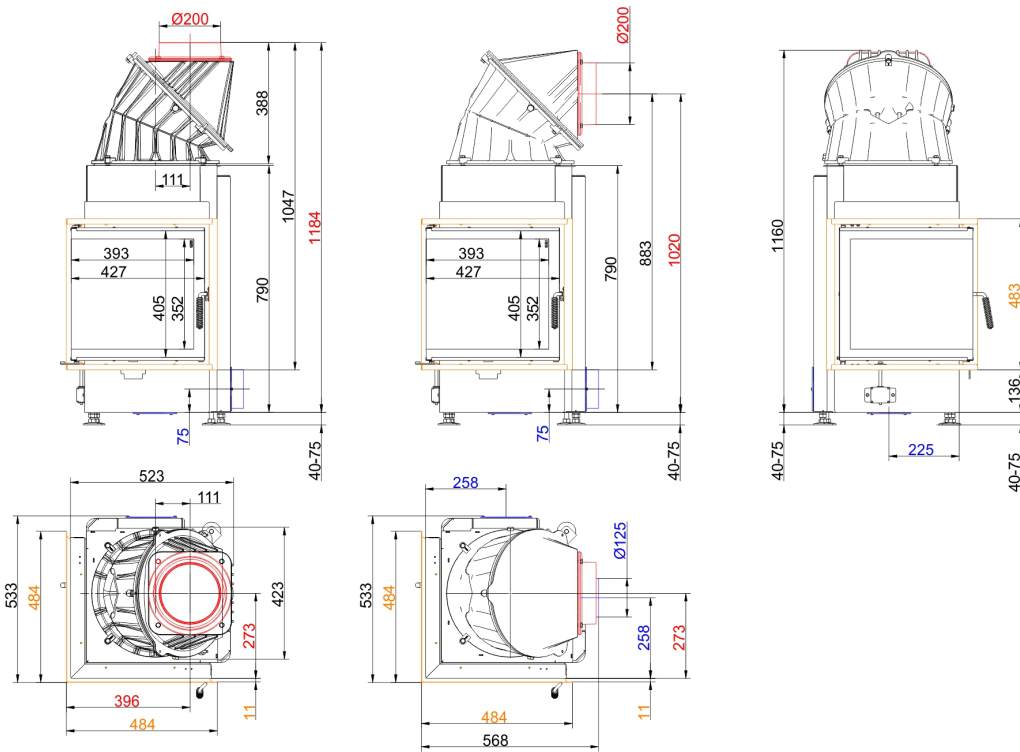
Перед монтажом облицовки протестируйте функцию самозакрывания, после чего снова зафиксируйте дверцу камина в крайнем верхнем положении. Совет: Обклеивание смотрового стекла и дверной ручки прозрачной (не самоклеящейся) пленкой эффективно помогает предотвратить их загрязнение. Перед первой растопкой камина эти пленки необходимо удалить!

Угловой камин имеет встроенный внутренний клапан горючего воздуха. Внешний клапан более не прилагается!

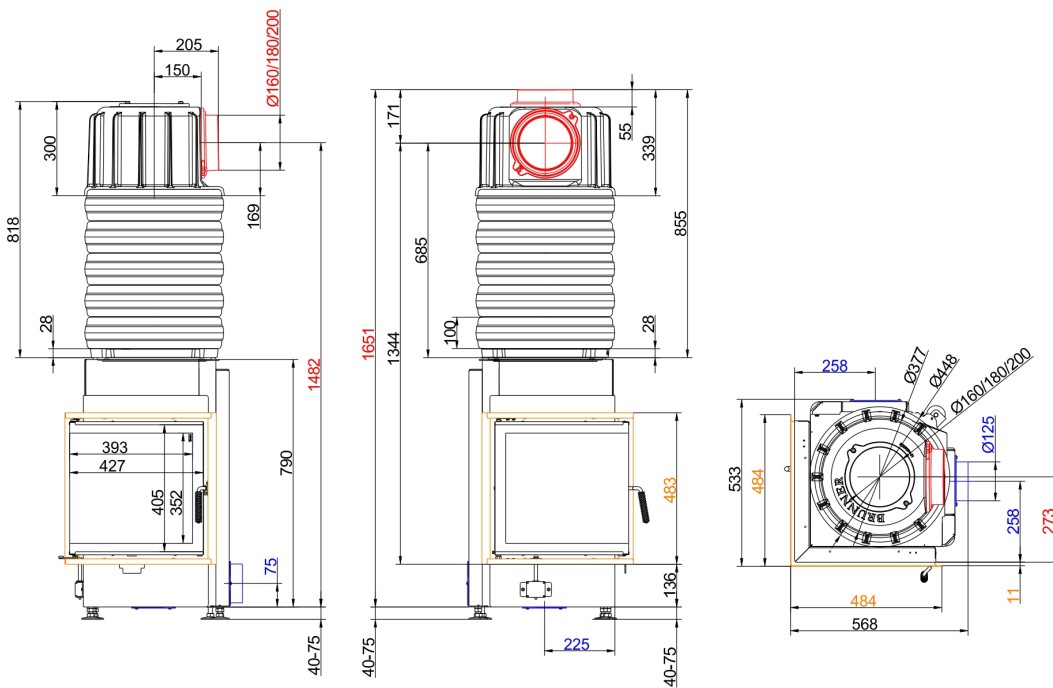
Встраивание топочной камеры:

Вставьте шамотные кирпичи в топочную камеру, следуя инструкции по сборке футеровки.

Dimension sheets - Eck-Kamin 42/42/42 side-opening door



... mit Blendrahmen und Warmlufthaube Guss



... mit Blendrahmen und MAS

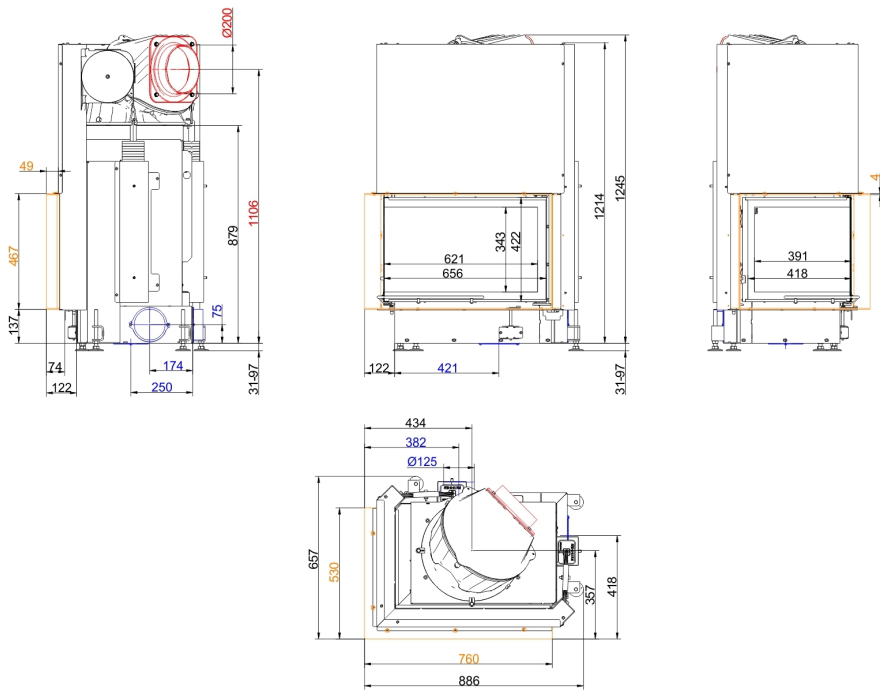
We suggest for CAD planning Palette CAD. Permanent updated drawings: www.brunner.de
 Frames /flue gas outlet connection/ combustion air supply connection/ front variants are marked in color.

Planning and installation - Eck-Kamin 42/42/42 side-opening door

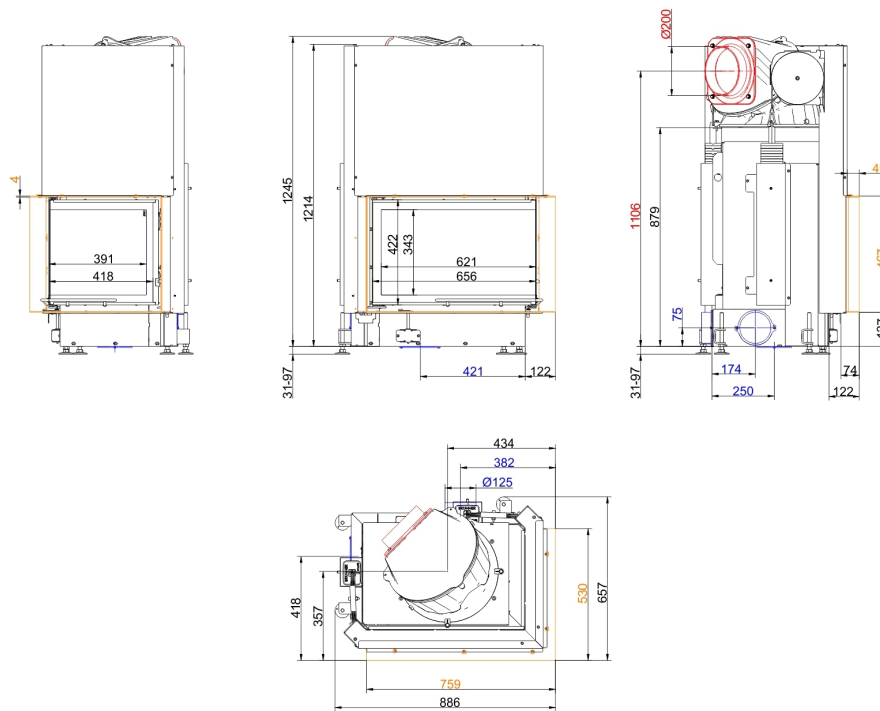
Tested according to		EN 13229 W	EN 13229 WA
Values measured at		Nennleistung ¹⁾	Storage operation ²⁾
Suitable for all construction types according to rules		OK	OK
EEL		112,8	112,8
Data for functional demonstration			
Rated heat power	kW	8	-
Fire wood volume	kg/h	2,7	5
Combustion performance	kW	10	22
Flue gas mass flow	g/s	7,1	21
Outlet temperature (before reheating surface)	°C	-	340
Flue gas temperature after:			
attached steel smoke hood	°C	210	246
5 x accumulation rings MAS incl. cast iron hood MAS ³⁾	°C	-	210
1,7 m ceramic accumulator	°C	-	180
1,2 m accumulation stones (MSS) ⁴⁾	°C	-	180
Necessary supply pressure	Pa	12	15
Combustion air consumption	m ³ /h	28	50
Wirkungsgrad	%	80	80
Combustion air connection Ø	mm	125	125
Heat distribution			
Insert / reheating surface	%	25 / 30	25 / 30
Glass pane (single / double)	%	45 / -	45 / -
Cross-section of gratings ⁵⁾			
Convection air	cm ²	800 / 100 / -	500 / 100 / 300
Supply air	cm ²	800 / 100 / -	500 / 100 / 300
Minimal oven surface for closed construction type			
Heat dissipating surface	m ²	4	4
Minimal distances of the fireplace			
to insulation layer	cm	6	6
to mounting floor	cm	4	4
Thermal insulation without / with air gratings ⁶⁾			
Mounting wall	cm	14 / 12	14 / 12
Floor	cm	2 / 2	2 / 2
Ceiling	cm	16 / 14	16 / 14
Brick lining for combustible wall	cm	10	10
Weight			
Fireplace / combustion chamber	kg	104 / 37 / -	
Meets requirement/limit values for:			
Germany/ Austria / Suisse / Norway		1.BImSchV (Stufe 2) / 15a BVG (2015) / LRV / NS 3059	

- 1) Indications to "Rated power" determined with metallic reheating surface
- 2) Indications to "Storage operation" for the manual execution of the reheating surface (reference values for the specialist)
- 3) Damper flap recommended
- 4) Standard value or calculated functional proof required
- 5) for fireplace inserts / flue gas pipe / metallic reheating surface
- 6) Values determined with upper air sections; stove cladding is heat emitting

Dimension sheets - Architektur-Eck 45/67/44

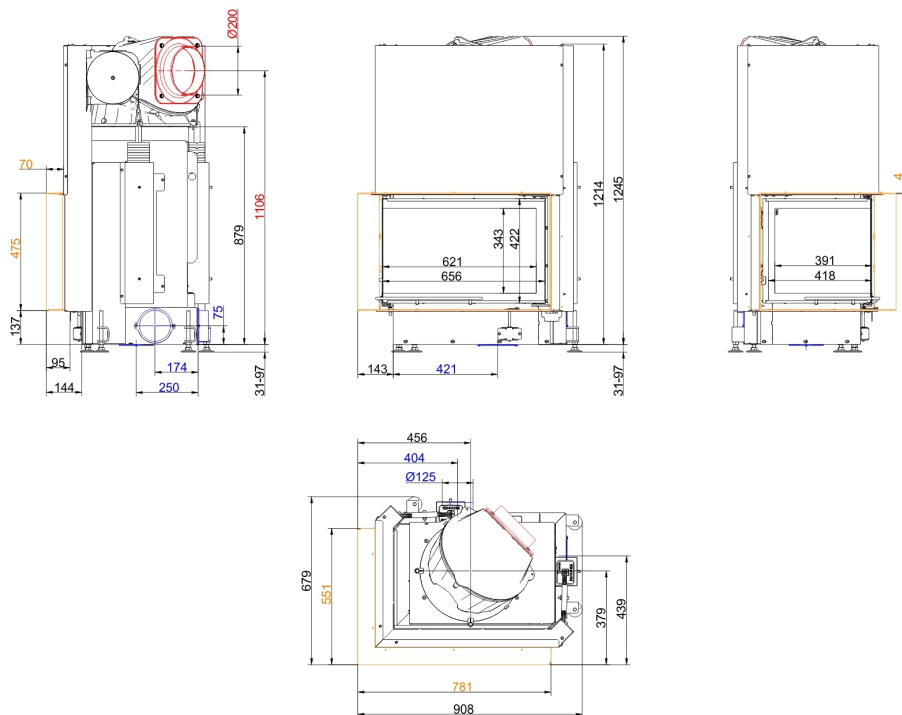


... links mit Anbaurahmen 50 mm und Warmlufthaube Guss

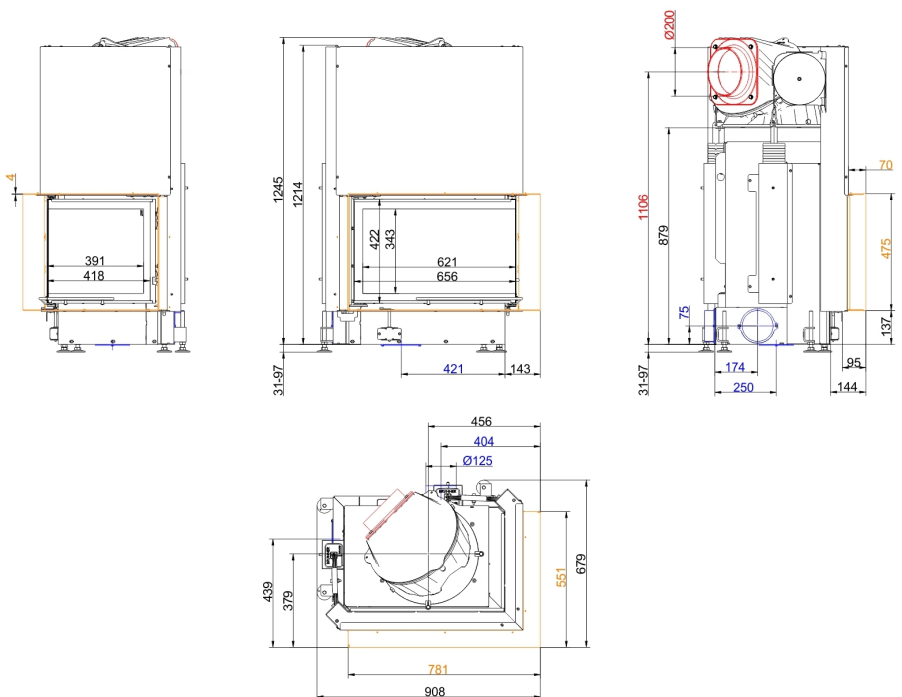


... rechts mit Anbaurahmen 50 mm und Warmlufthaube Guss

Dimension sheets - Architektur-Eck 45/67/44

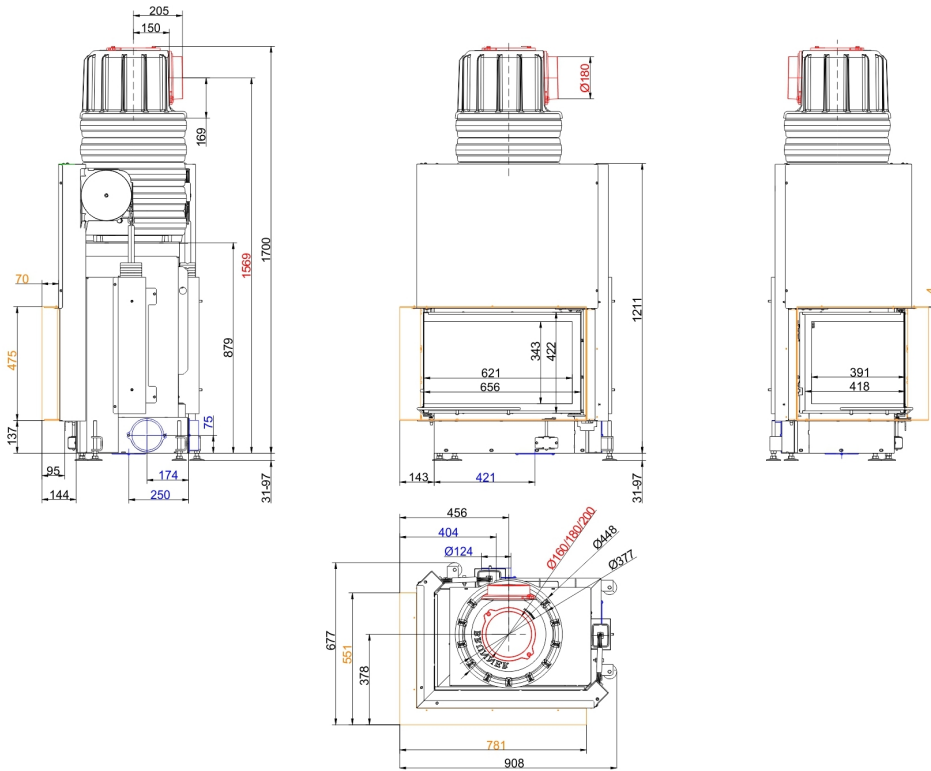


... links mit Anbaurahmen 70 mm und Warmlufthaube Guss

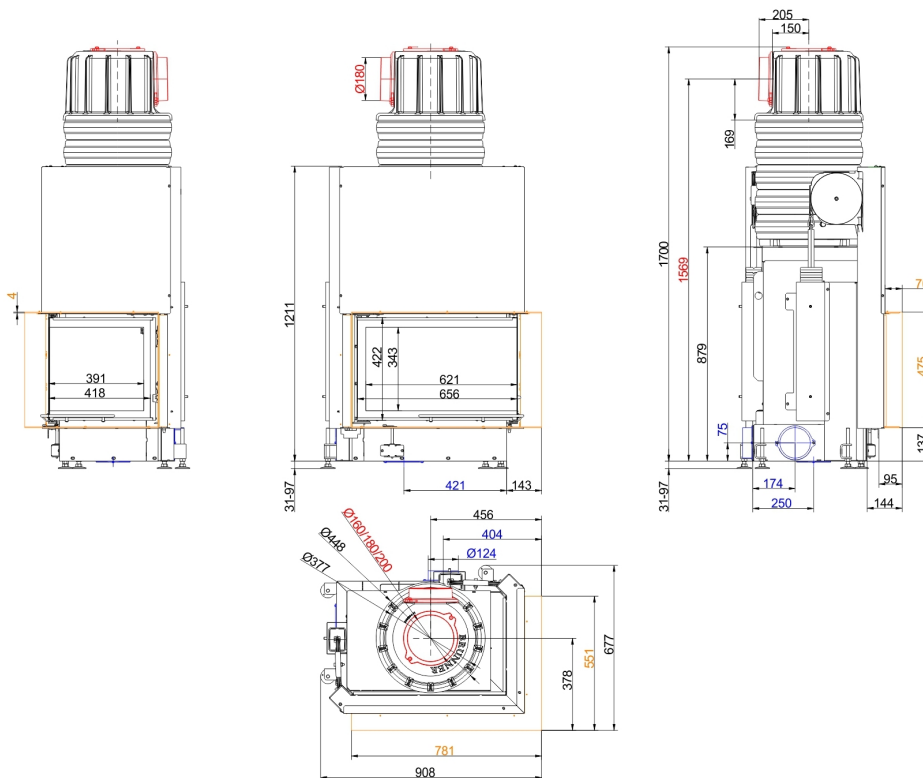


... rechts mit Anbaurahmen 70 mm und Warmlufthaube Guss

Dimension sheets - Architektur-Eck 45/67/44



... links mit Anbaurahmen 70 mm und MAS



... rechts mit Anbaurahmen 70 mm und MAS

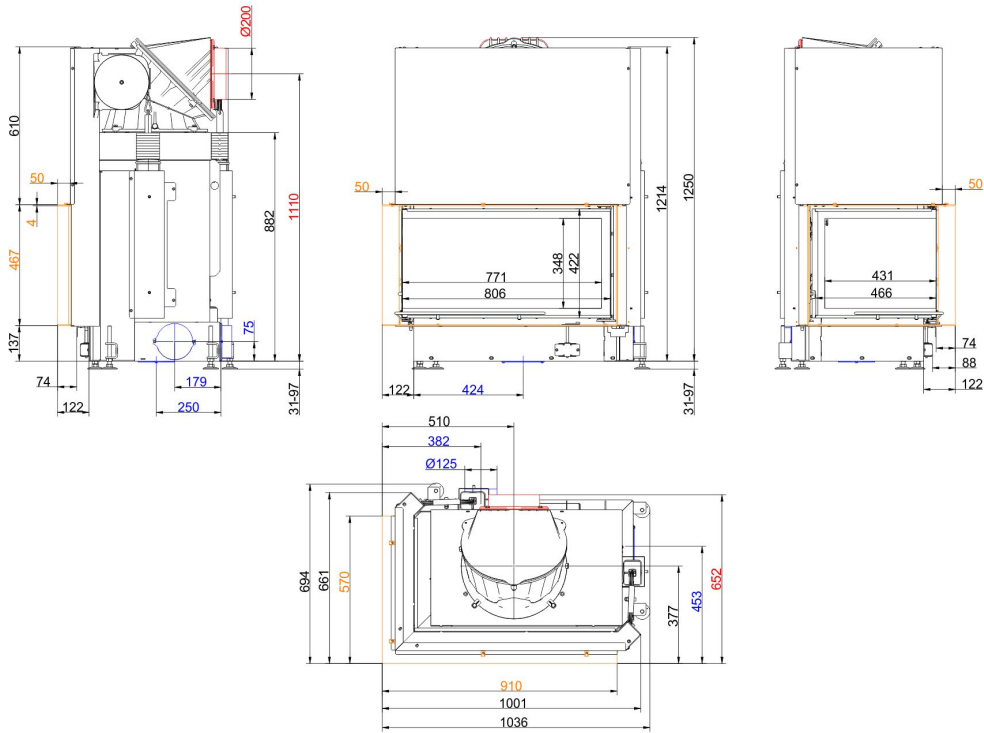
We suggest for CAD planning Palette CAD. Permanent updated drawings: www.brunner.de
 Frames /flue gas outlet connection/ combustion air supply connection/ front variants are marked in color.

Planning and installation - Architektur-Eck 45/67/44

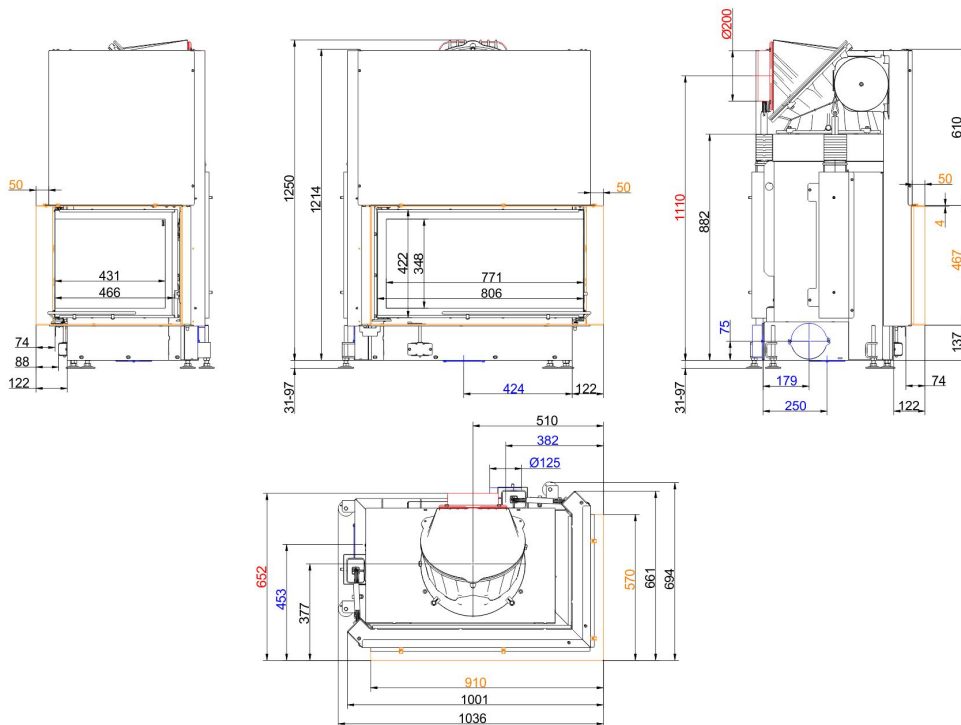
Tested according to		EN 13229 W	EN 13229 WA
Values measured at		Nennleistung ¹⁾	Storage operation ²⁾
Suitable for all construction types according to rules		OK	OK
EEL		105,7	105,7
Data for functional demonstration			
Rated heat power	kW	11	-
Fire wood volume	kg/h	3,2	5
Combustion performance	kW	14	22
Flue gas mass flow	g/s	13	19
Outlet temperature (before reheating surface)	°C	-	330
Flue gas temperature after:			
cast iron hot air hood	°C	225	255
1 x adjoining cast iron radiator (GNF 8/10)	°C	-	151
5 x accumulation rings MAS incl. cast iron hood MAS ³⁾	°C	-	220
2,0 m ceramic accumulator	°C	-	180
1,4 m accumulation stones (MSS) ⁴⁾	°C	-	180
Necessary supply pressure	Pa	13	15
Combustion air consumption	m ³ /h	32	50
Combustion air connection Ø	mm	125	125
Heat distribution			
Insert / reheating surface	%	25 / 30	25 / 30
Glass pane (single / double)	%	45 / -	45 / -
Cross-section of gratings ⁵⁾			
Convection air	cm ²	650 / 100 / 350	650 / 100 / 350
Supply air	cm ²	650 / 100 / 350	650 / 100 / 350
Minimal oven surface for closed construction type			
Heat dissipating surface	m ²	4,5	4,5
Minimal distances of the fireplace			
to insulation layer	cm	6	6
to mounting floor	cm	15	15
Thermal insulation without / with air gratings ⁶⁾			
Mounting wall	cm	14 / 10	14 / 10
Floor	cm	2 / 2	2 / 2
Ceiling	cm	19 / 14	19 / 14
Brick lining for combustible wall	cm	10	10
Weight			
Fireplace / combustion chamber	kg	213 / 56	
Meets requirement/limit values for:			
Germany/ Austria / Suisse / Norway		1.BImSchV (Stufe 2) / 15a BVG (2015) / LRV / NS 3059	

- 1) Indications to "Rated power" determined with metallic reheating surface
- 2) Indications to "Storage operation" for the manual execution of the reheating surface (reference values for the specialist)
- 3) Damper flap recommended
- 4) Standard value or calculated functional proof required
- 5) for fireplace inserts / flue gas pipe / metallic reheating surface
- 6) Values determined with upper air sections; stove cladding is heat emitting

Dimension sheets - Architektur-Eck 45/82/48

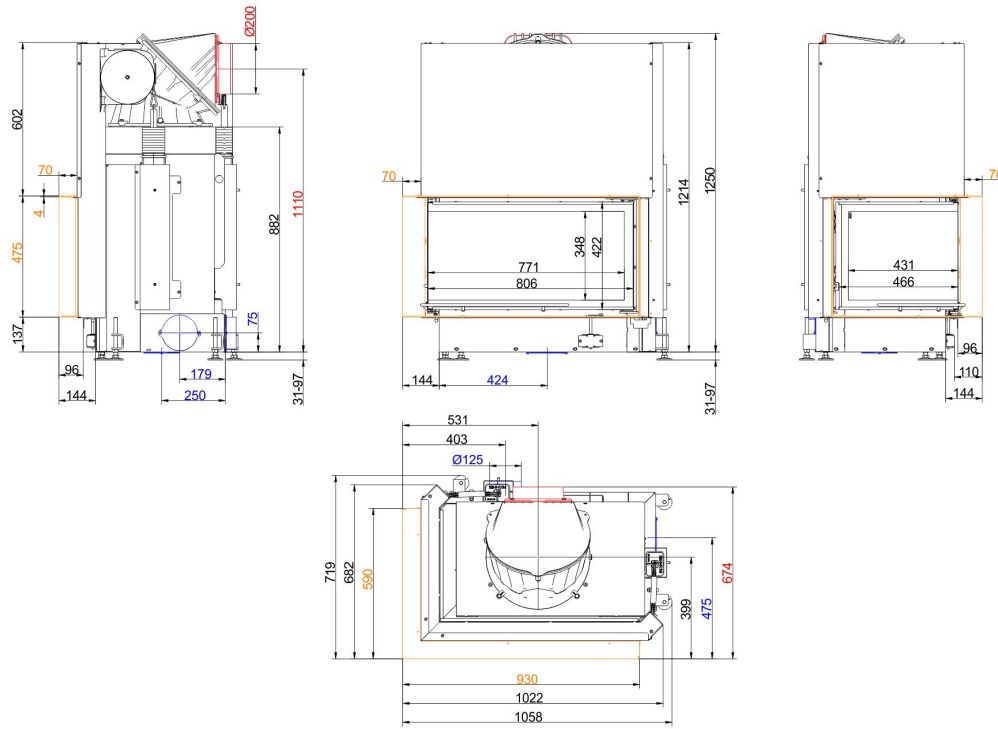


... links mit Anbaurahmen 50 mm und Warmlufthaube Guss

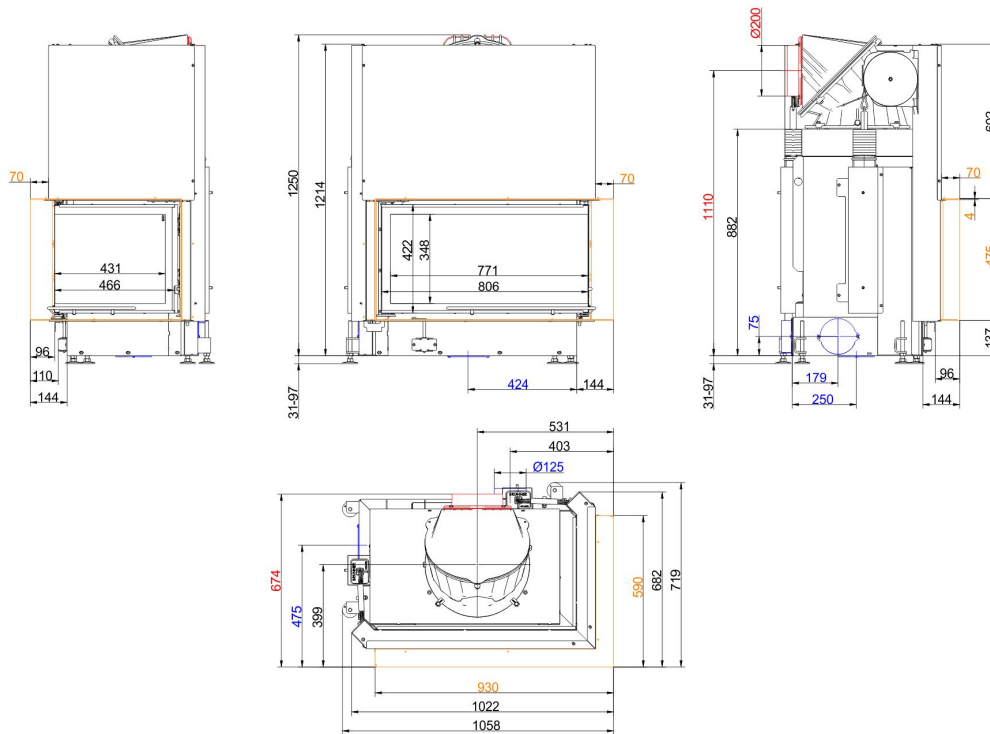


... rechts mit Anbaurahmen 50 mm und Warmlufthaube Guss

Dimension sheets - Architektur-Eck 45/82/48

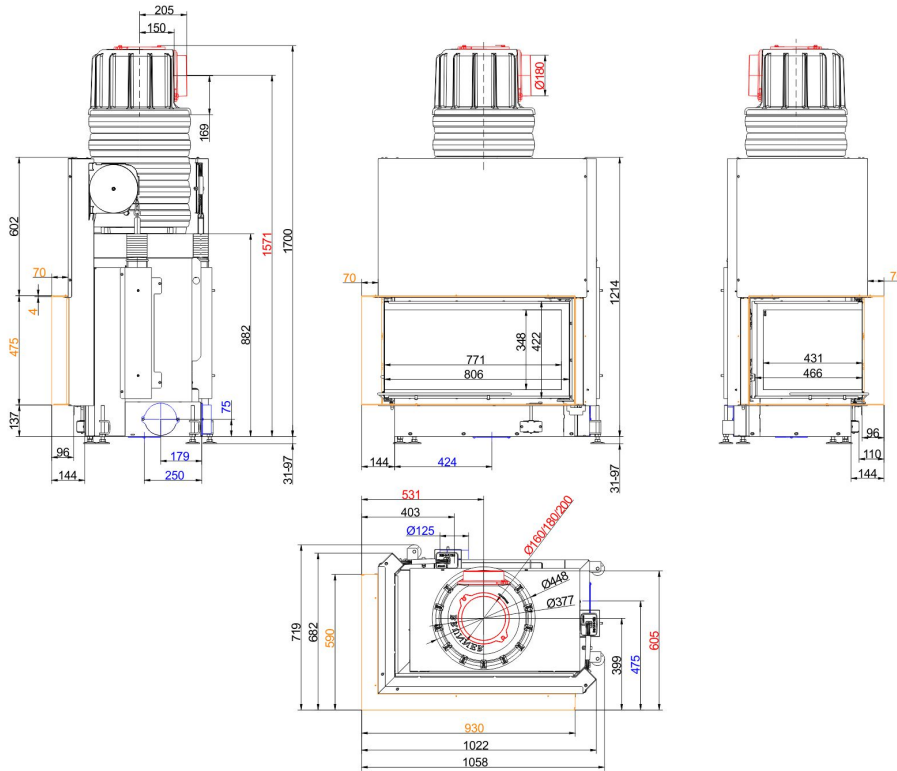


... links mit Anbaurahmen 70 mm und Warmlufthaube Guss

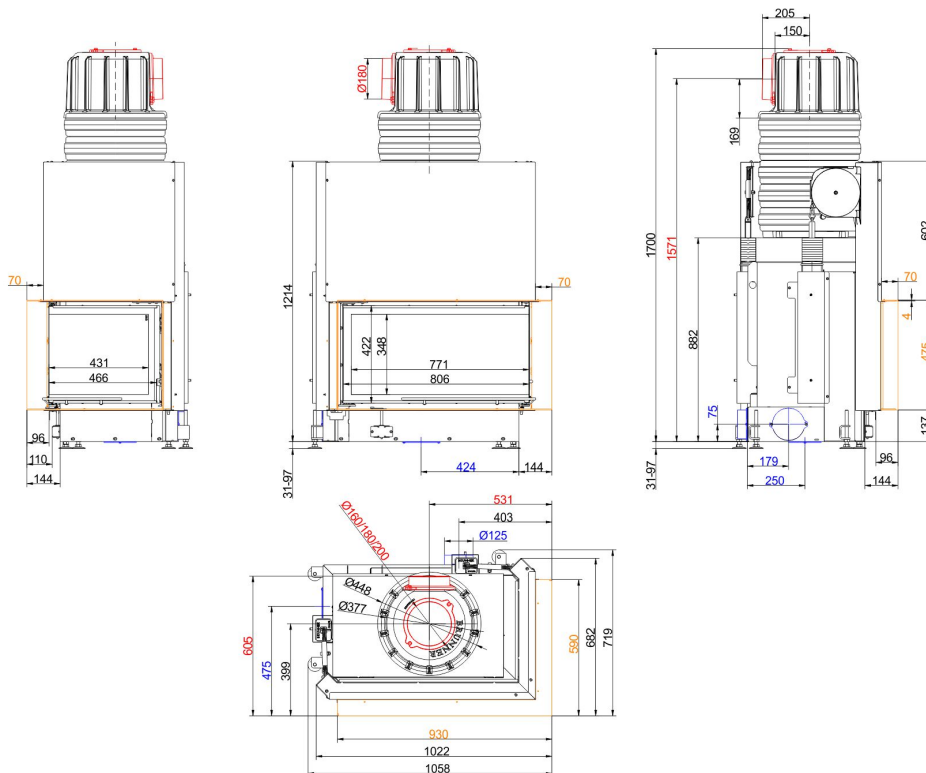


... rechts mit Anbaurahmen 70 mm und Warmlufthaube Guss

Dimension sheets - Architektur-Eck 45/82/48



... links mit Anbaurahmen 70 mm und MAS



... rechts mit Anbaurahmen 70 mm und MAS

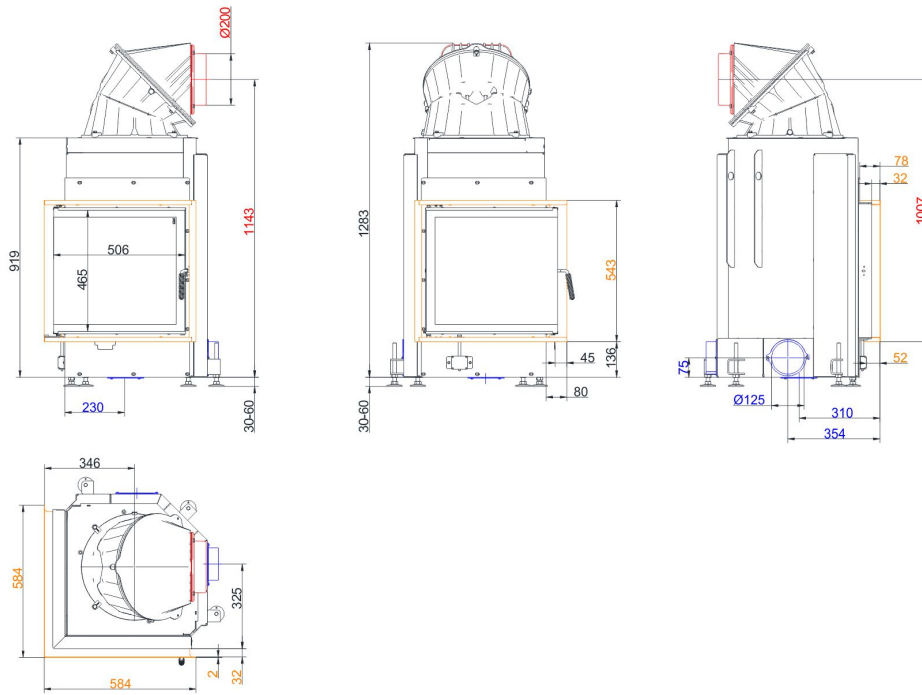
We suggest for CAD planning Palette CAD. Permanent updated drawings: www.brunner.de
 Frames /flue gas outlet connection/ combustion air supply connection/ front variants are marked in color.

Planning and installation - Architektur-Eck 45/82/48

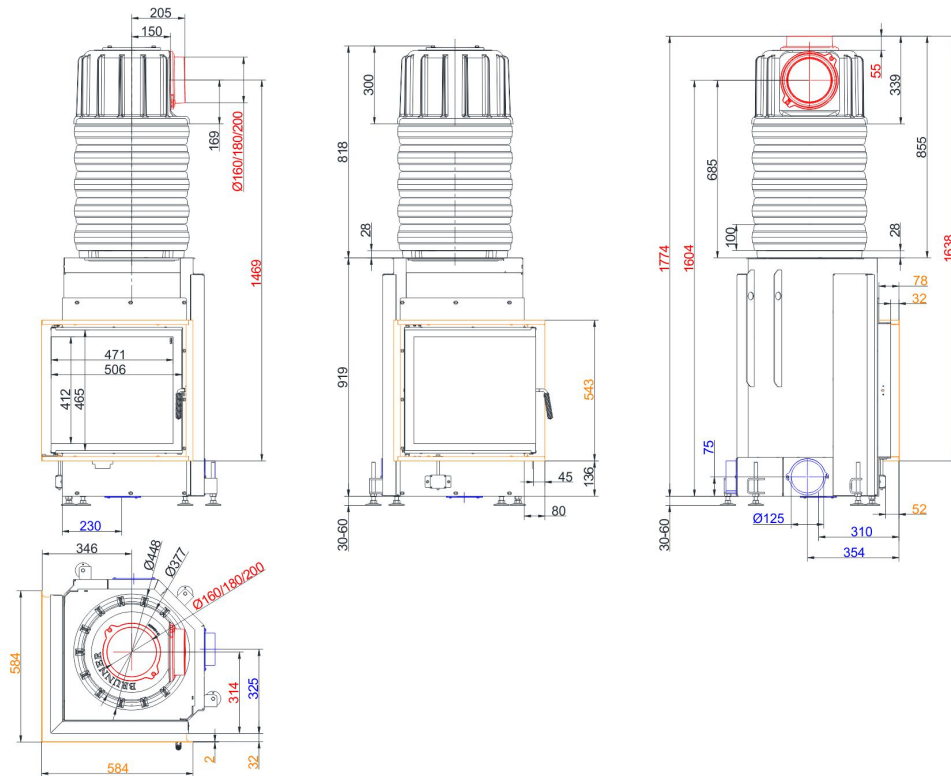
Tested according to		EN 13229 W	EN 13229 WA
Values measured at		Nennleistung ¹⁾	Storage operation ²⁾
Suitable for all construction types according to rules		OK	OK
EEL		105,7	105,7
Data for functional demonstration			
Rated heat power	kW	12	-
Fire wood volume	kg/h	3,6	5
Combustion performance	kW	16	22
Flue gas mass flow	g/s	11	19
Outlet temperature (before reheating surface)	°C	-	325
Flue gas temperature after:			
cast iron hot air hood	°C	195	260
1 x adjoining cast iron radiator (GNF 8/10)	°C	-	142
5 x accumulation rings MAS incl. cast iron hood MAS ³⁾	°C	-	200
2 m ceramic accumulator ⁴⁾	°C	-	180
1,4 m accumulation stones (MSS) ⁴⁾	°C	-	180
Necessary supply pressure	Pa	12	15
Combustion air consumption	m ³ /h	32	50
Combustion air connection Ø	mm	125	125
Heat distribution			
Insert / reheating surface	%	25 / 30	25 / 30
Glass pane (single / double)	%	45 / -	45 / -
Cross-section of gratings ⁵⁾			
Convection air	cm ²	700 / 100 / 400	700 / 100 / 400
Supply air	cm ²	700 / 100 / 400	700 / 100 / 400
Minimal oven surface for closed construction type			
Heat dissipating surface	m ²	5	5
Minimal distances of the fireplace			
to insulation layer	cm	6	6
to mounting floor	cm	15	15
Thermal insulation without / with air gratings ⁶⁾			
Mounting wall	cm	14 / 10	14 / 10
Floor	cm	2 / 2	2 / 2
Ceiling	cm	19 / 14	19 / 14
Brick lining for combustible wall	cm	10	10
Weight			
Fireplace / combustion chamber	kg	238 / 71	
Meets requirement/limit values for:			
Germany/ Austria / Suisse / Norway		1.BImSchV (Stufe 2) / 15a BVG (2015) / LRV / NS 3059	

- 1) Indications to "Rated power" determined with metallic reheating surface
- 2) Indications to "Storage operation" for the manual execution of the reheating surface (reference values for the specialist)
- 3) Damper flap recommended
- 4) Standard value or calculated functional proof required
- 5) for fireplace inserts / flue gas pipe / metallic reheating surface
- 6) Values determined with upper air sections; stove cladding is heat emitting

Dimension sheets - Eck-Kamin 51/52/52 side-opening door

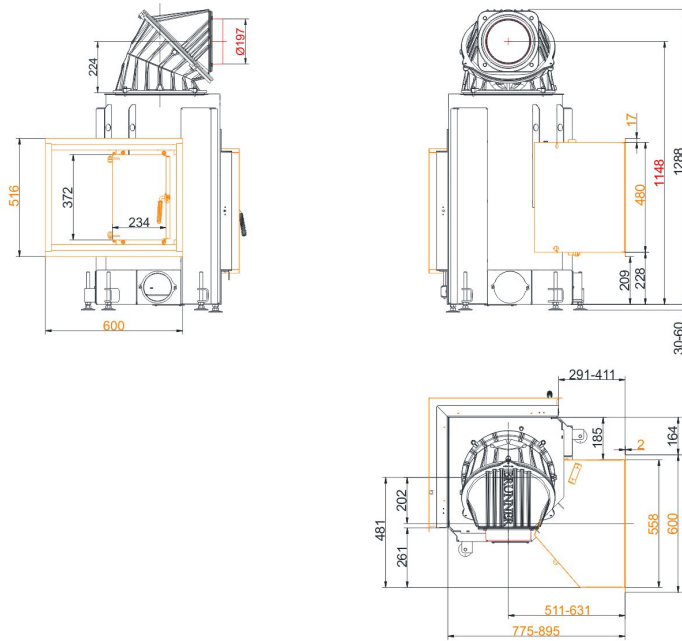


... mit Blendrahmen und cast iron hot air hood

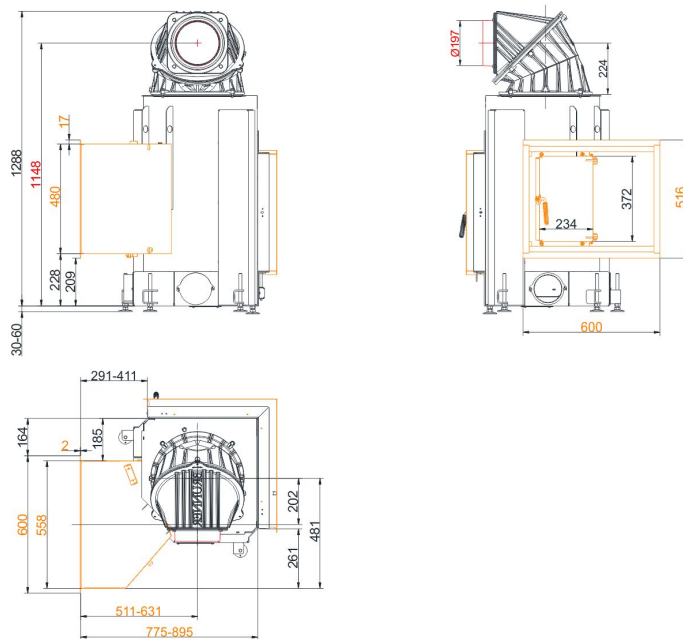


... mit Blendrahmen und MAS

Dimension sheets - Eck-Kamin 51/52/52 side-opening door



... mit Durchheiztüre links



... mit Durchheiztüre rechts

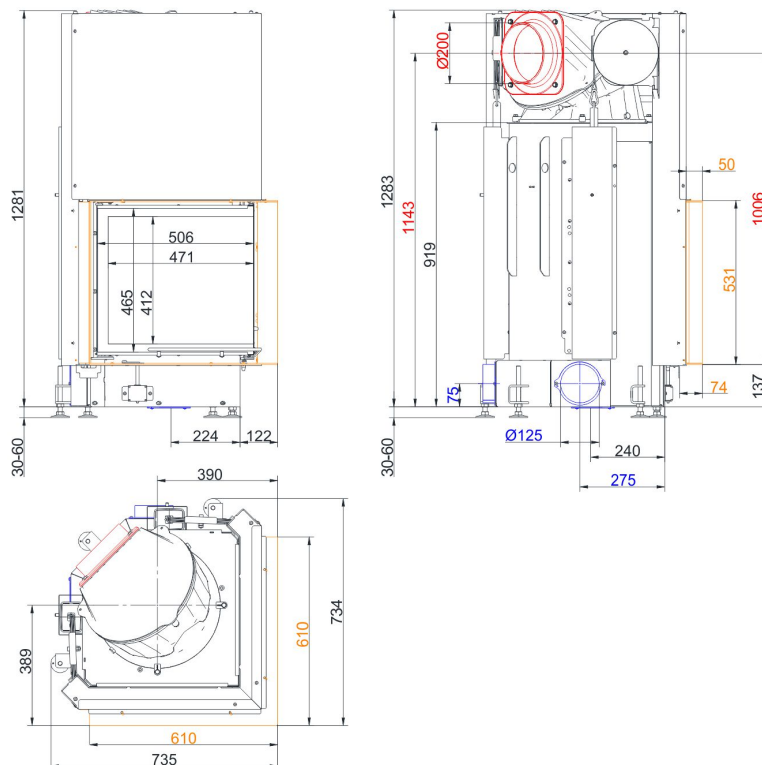
We suggest for CAD planning Palette CAD. Permanent updated drawings: www.brunner.de
 Frames /flue gas outlet connection/ combustion air supply connection/ front variants are marked in color.

Planning and installation - Eck-Kamin 51/52/52 side-opening door

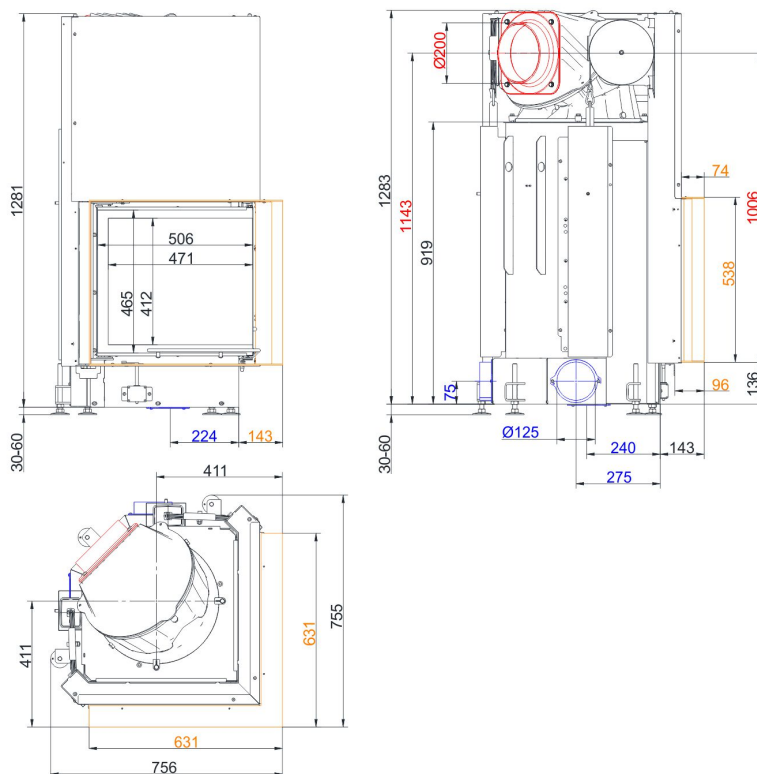
Tested according to		EN 13229 W	EN 13229 WA
Values measured at		Nennleistung ¹⁾	Storage operation ²⁾
Suitable for all construction types according to rules		OK	OK
EEL		105,7	105,7
Data for functional demonstration			
Rated heat power	kW	10	-
Fire wood volume	kg/h	3	5
Combustion performance	kW	13	22
Flue gas mass flow	g/s	12	21
Outlet temperature (before reheating surface)	°C	-	340
Flue gas temperature after:			
attached steel smoke hood	°C	210	246
1 x adjoining cast iron radiator (GNF 8/10)	°C	-	124
5 x accumulation rings MAS incl. cast iron hood MAS ³⁾	°C	-	210
2 m ceramic accumulator ⁴⁾	°C	-	180
1,4 m accumulation stones (MSS) ⁴⁾	°C	-	180
Necessary supply pressure	Pa	13	15
Combustion air consumption	m ³ /h	30	50
Combustion air connection Ø	mm	125	125
Heat distribution			
Insert / reheating surface	%	25 / 30	25 / 30
Glass pane (single / double)	%	45 / -	45 / -
Cross-section of gratings ⁵⁾			
Convection air	cm ²	500 / 100 / 300	500 / 100 / 300
Supply air	cm ²	500 / 100 / 300	500 / 100 / 300
Minimal oven surface for closed construction type			
Heat dissipating surface	m ²	4	4
Minimal distances of the fireplace			
to insulation layer	cm	6	6
to mounting floor	cm	15	15
Thermal insulation without / with air gratings ⁶⁾			
Mounting wall	cm	14 / 10	14 / 10
Floor	cm	2 / 2	2 / 2
Ceiling	cm	16 / 12	16 / 12
Brick lining for combustible wall	cm	10	10
Weight			
Fireplace / combustion chamber	kg	123 / 52	
Meets requirement/limit values for:			
Germany/ Austria / Suisse / Norway		1.BImSchV (Stufe 2) / 15a BVG (2015) / LRV / NS 3059	

- 1) Indications to "Rated power" determined with metallic reheating surface
- 2) Indications to "Storage operation" for the manual execution of the reheating surface (reference values for the specialist)
- 3) Damper flap recommended
- 4) Standard value or calculated functional proof required
- 5) for fireplace inserts / flue gas pipe / metallic reheating surface
- 6) Values determined with upper air sections; stove cladding is heat emitting

Dimension sheets - Eck-Kamin 51/52/52 lifting door (easy-lift)

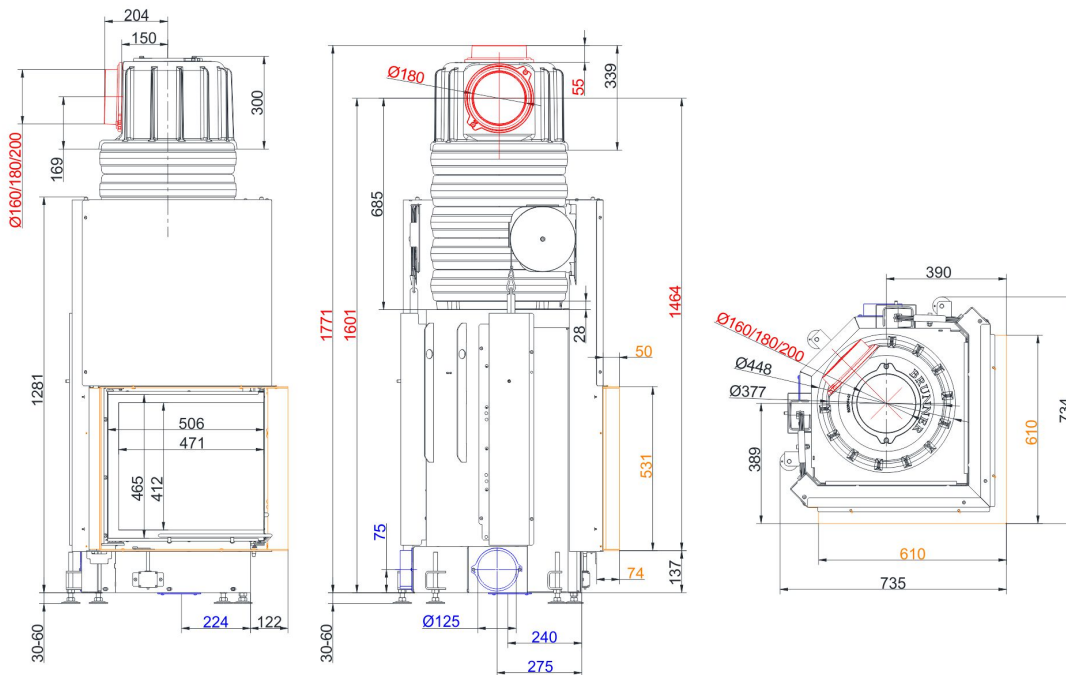


... mit Anbaurahmen 50 mm und Warmlufthaube Guss

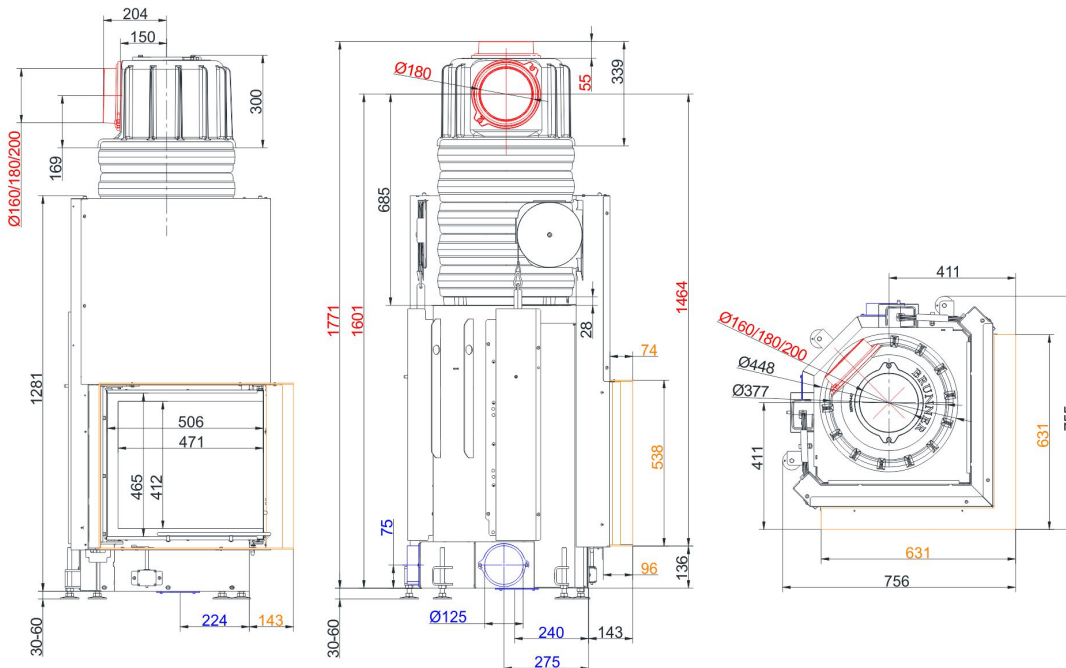


... mit Anbaurahmen 70 mm und Warmlufthaube Guss

Dimension sheets - Eck-Kamin 51/52/52 lifting door (easy-lift)



... mit Anbaurahmen 50 mm und MAS



... mit Anbaurahmen 70 mm und MAS

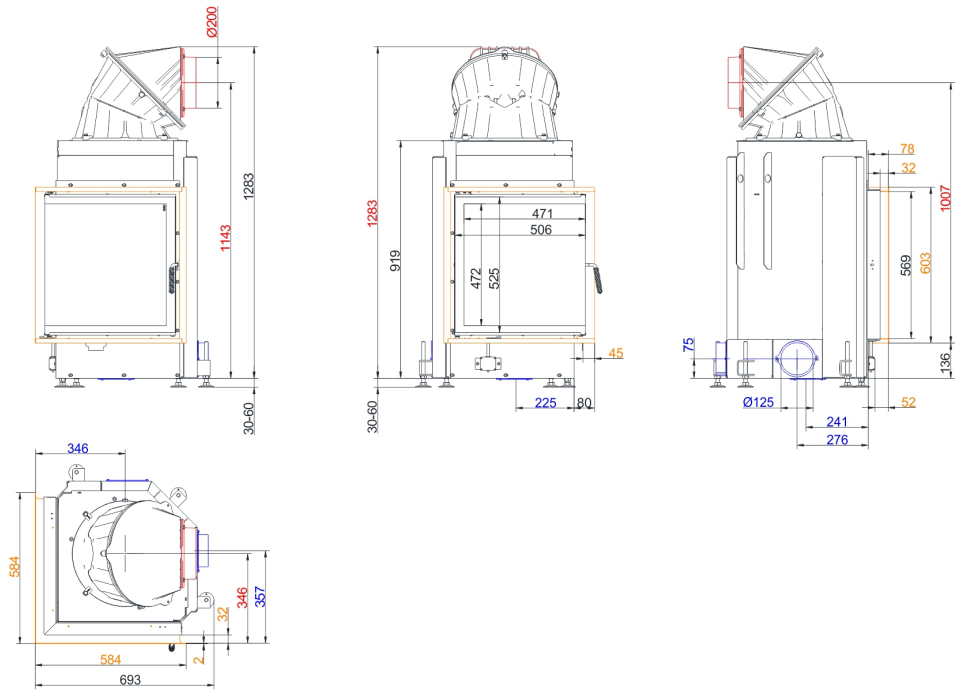
We suggest for CAD planning Palette CAD. Permanent updated drawings: www.brunner.de
 Frames /flue gas outlet connection/ combustion air supply connection/ front variants are marked in color.

Planning and installation - Eck-Kamin 51/52/52 lifting door (easy-lift)

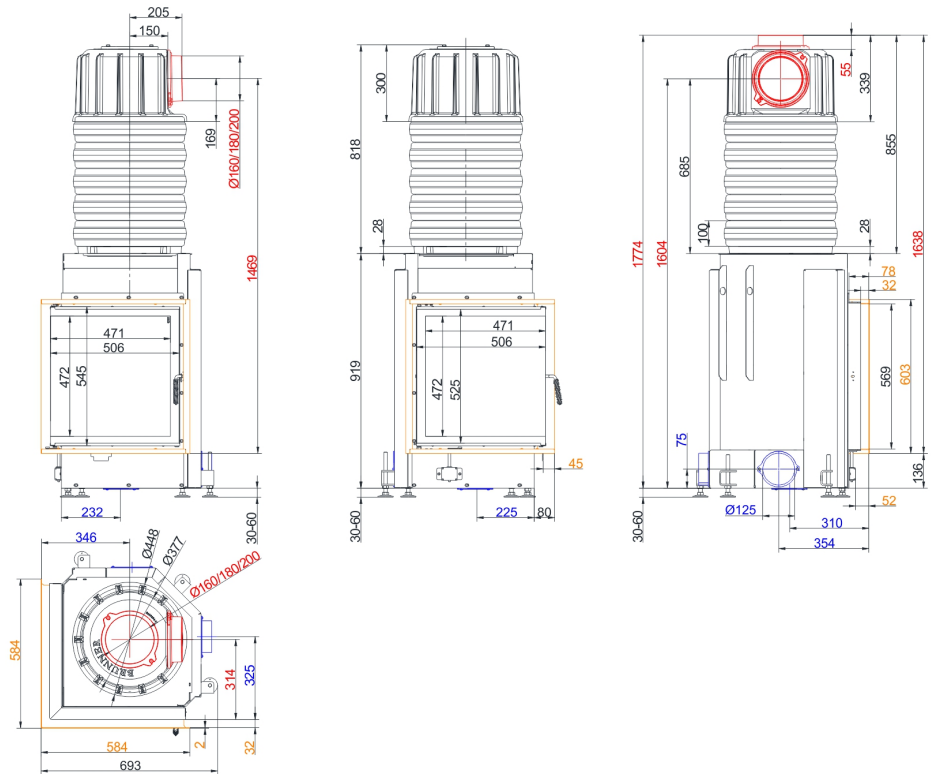
Tested according to		EN 13229 W	EN 13229 WA
Values measured at		Nennleistung ¹⁾	Storage operation ²⁾
Suitable for all construction types according to rules		OK	OK
EEL		105,7	105,7
Data for functional demonstration			
Rated heat power	kW	10	-
Fire wood volume	kg/h	3	5
Combustion performance	kW	13	22
Flue gas mass flow	g/s	12	21
Outlet temperature (before reheating surface)	°C	-	340
Flue gas temperature after:			
attached steel smoke hood	°C	210	246
1 x adjoining cast iron radiator (GNF 8/10)	°C	-	124
5 x accumulation rings MAS incl. cast iron hood MAS ³⁾	°C	-	210
2 m ceramic accumulator ⁴⁾	°C	-	180
1,4 m accumulation stones (MSS) ⁴⁾	°C	-	180
Necessary supply pressure	Pa	13	15
Combustion air consumption	m ³ /h	30	50
Combustion air connection Ø	mm	125	125
Heat distribution			
Insert / reheating surface	%	25 / 30	25 / 30
Glass pane (single / double)	%	45 / -	45 / -
Cross-section of gratings ⁵⁾			
Convection air	cm ²	500 / 100 / 300	500 / 100 / 300
Supply air	cm ²	500 / 100 / 300	500 / 100 / 300
Minimal oven surface for closed construction type			
Heat dissipating surface	m ²	4	4
Minimal distances of the fireplace			
to insulation layer	cm	6	6
to mounting floor	cm	15	15
Thermal insulation without / with air gratings ⁶⁾			
Mounting wall	cm	14 / 10	14 / 10
Floor	cm	2 / 2	2 / 2
Ceiling	cm	16 / 12	16 / 12
Brick lining for combustible wall	cm	10	10
Weight			
Fireplace / combustion chamber	kg	208 / 52	
Meets requirement/limit values for:			
Germany/ Austria / Suisse / Norway		1.BImSchV (Stufe 2) / 15a BVG (2015) / LRV / NS 3059	

- 1) Indications to "Rated power" determined with metallic reheating surface
- 2) Indications to "Storage operation" for the manual execution of the reheating surface (reference values for the specialist)
- 3) Damper flap recommended
- 4) Standard value or calculated functional proof required
- 5) for fireplace inserts / flue gas pipe / metallic reheating surface
- 6) Values determined with upper air sections; stove cladding is heat emitting

Dimension sheets - Eck-Kamin 57/52/52 side-opening door

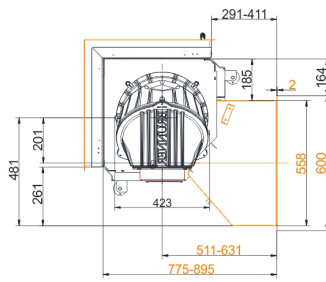
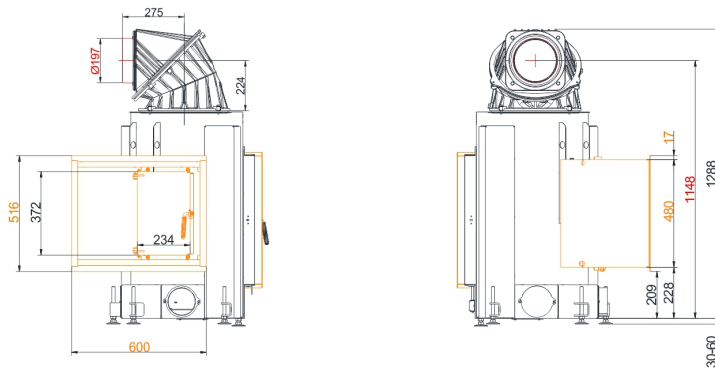


... mit Blendrahmen und Warmlufthaube Guss

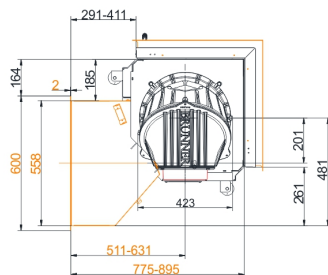
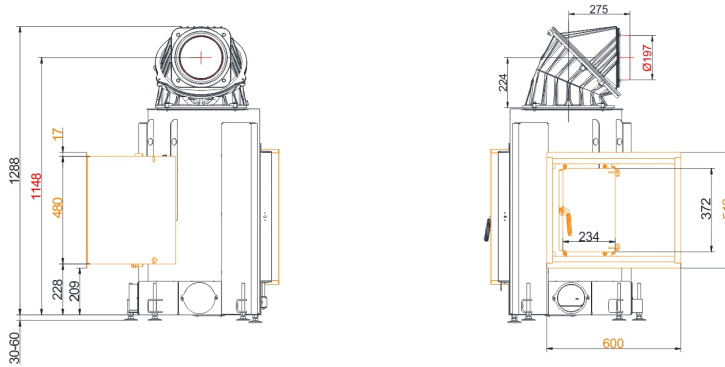


... mit Blendrahmen und MAS

Dimension sheets - Eck-Kamin 57/52/52 side-opening door



... with additional fire door left



... with additional fire door right

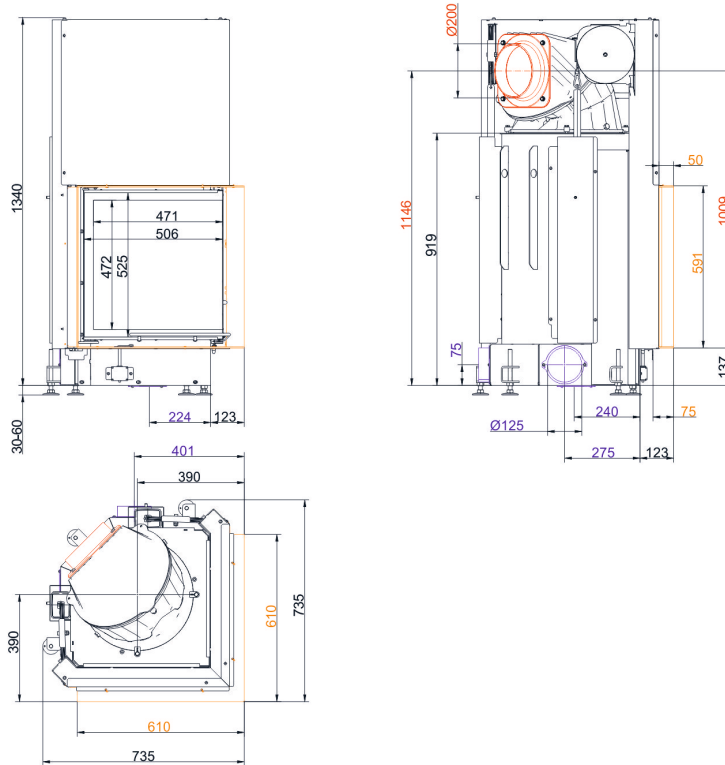
We suggest for CAD planning Palette CAD. Permanent updated drawings: www.brunner.de
 Frames /flue gas outlet connection/ combustion air supply connection/ front variants are marked in color.

Planning and installation - Eck-Kamin 57/52/52 side-opening door

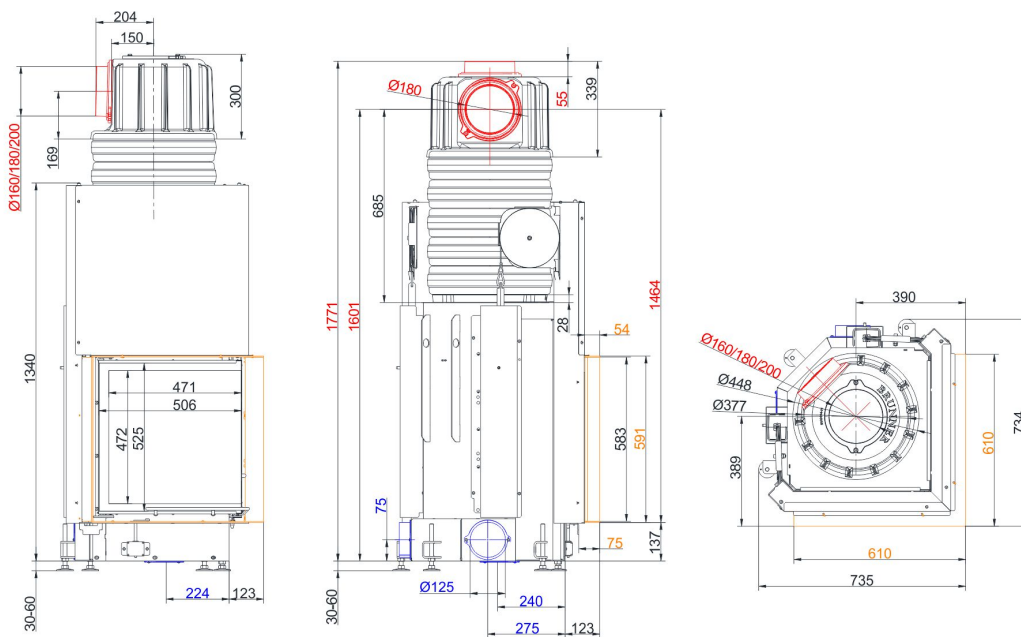
Tested according to		EN 13229 W	EN 13229 WA
Values measured at		Nennleistung ¹⁾	Storage operation ²⁾
Suitable for all construction types according to rules		OK	OK
EEL		105,7	105,7
Data for functional demonstration			
Rated heat power	kW	10	-
Fire wood volume	kg/h	3	5
Combustion performance	kW	13	22
Flue gas mass flow	g/s	12	21
Outlet temperature (before reheating surface)	°C	-	340
Flue gas temperature after:			
attached steel smoke hood	°C	210	246
1 x adjoining cast iron radiator (GNF 8/10)	°C	-	124
5 x accumulation rings MAS incl. cast iron hood MAS ³⁾	°C	-	210
2 m ceramic accumulator ⁴⁾	°C	-	180
1,4 m accumulation stones (MSS) ⁴⁾	°C	-	180
Necessary supply pressure	Pa	13	15
Combustion air consumption	m ³ /h	30	50
Combustion air connection Ø	mm	125	125
Heat distribution			
Insert / reheating surface	%	25 / 30	25 / 30
Glass pane (single / double)	%	45 / -	45 / -
Cross-section of gratings ⁵⁾			
Convection air	cm ²	500 / 100 / 300	500 / 100 / 300
Supply air	cm ²	500 / 100 / 300	500 / 100 / 300
Minimal oven surface for closed construction type			
Heat dissipating surface	m ²	4	4
Minimal distances of the fireplace			
to insulation layer	cm	6	6
to mounting floor	cm	15	15
Thermal insulation without / with air gratings ⁶⁾			
Mounting wall	cm	14 / 10	14 / 10
Floor	cm	2 / 2	2 / 2
Ceiling	cm	16 / 12	16 / 12
Brick lining for combustible wall	cm	10	10
Weight			
Fireplace / combustion chamber	kg	195 / 52	
Meets requirement/limit values for:			
Germany/ Austria / Suisse / Norway		1.BImSchV (Stufe 2) / 15a BVG (2015) / LRV / NS 3059	

- 1) Indications to "Rated power" determined with metallic reheating surface
- 2) Indications to "Storage operation" for the manual execution of the reheating surface (reference values for the specialist)
- 3) Damper flap recommended
- 4) Standard value or calculated functional proof required
- 5) for fireplace inserts / flue gas pipe / metallic reheating surface
- 6) Values determined with upper air sections; stove cladding is heat emitting

Dimension sheets - Eck-Kamin 57/52/52 lifting door (easy-lift)

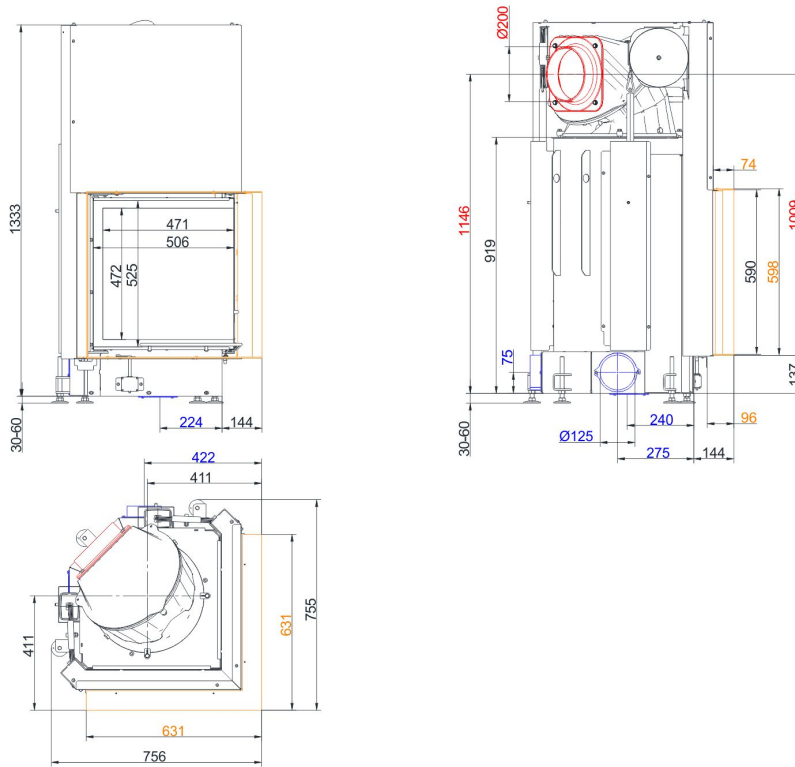


... mit Anbaurahmen 50 mm und Warmlufthaube Guss

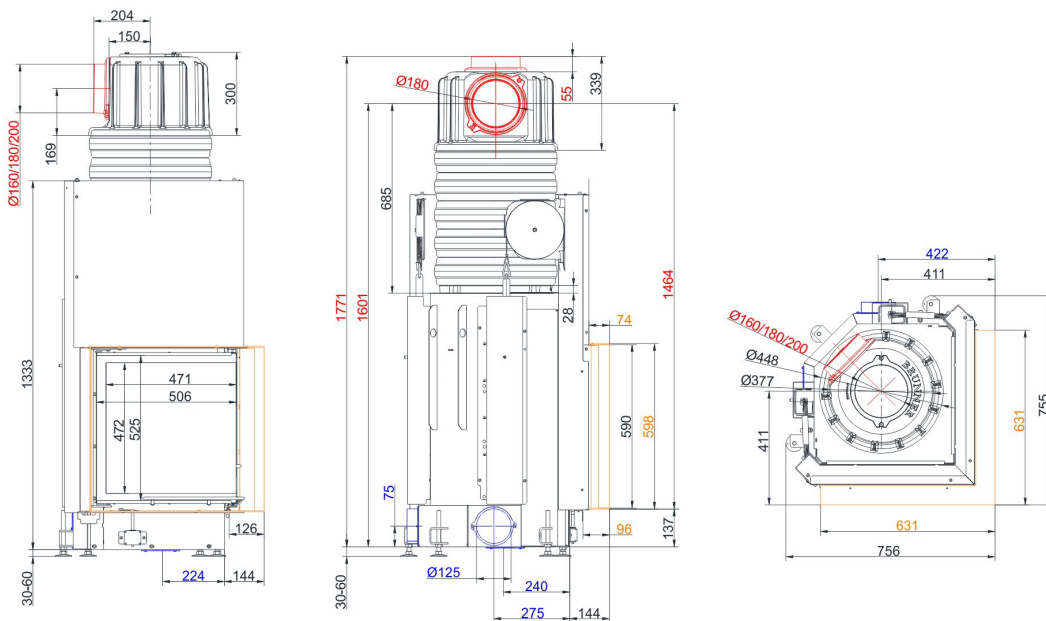


... mit Anbaurahmen 50 mm und MAS

Dimension sheets - Eck-Kamin 57/52/52 lifting door (easy-lift)



... mit Anbaurahmen 70 mm und Warmlufthaube Guss



... mit Anbaurahmen 70 mm und MAS

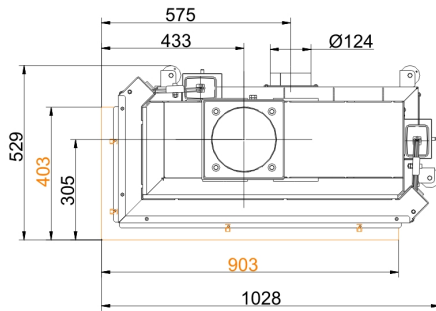
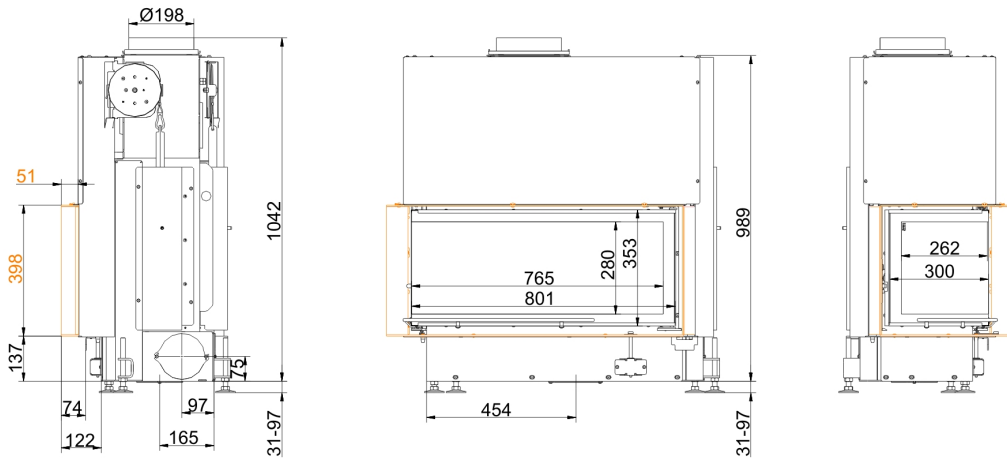
We suggest for CAD planning Palette CAD. Permanent updated drawings: www.brunner.de
 Frames /flue gas outlet connection/ combustion air supply connection/ front variants are marked in color.

Planning and installation - Eck-Kamin 57/52/52 lifting door (easy-lift)

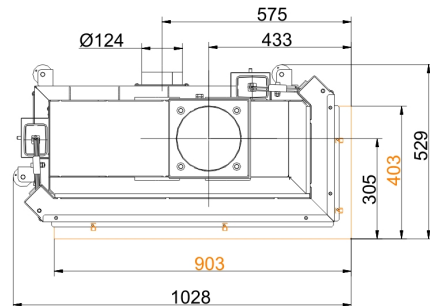
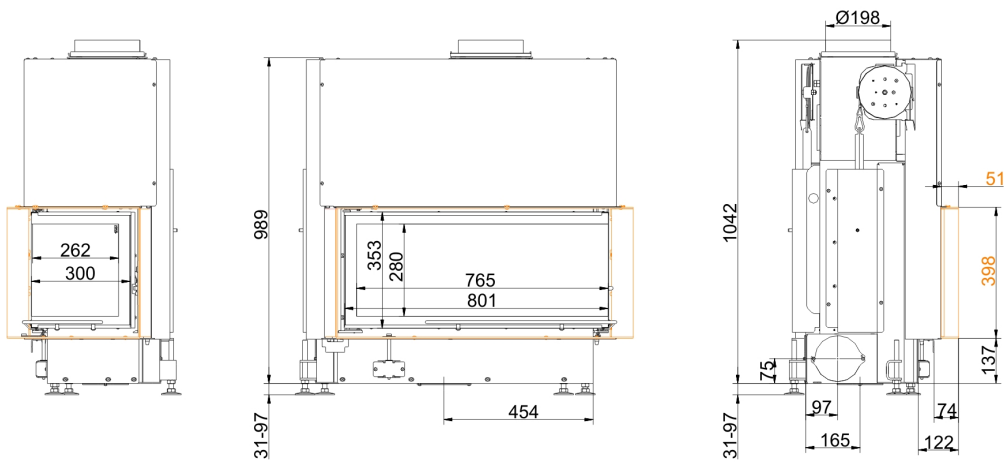
Tested according to		EN 13229 W	EN 13229 WA
Values measured at		Nennleistung ¹⁾	Storage operation ²⁾
Suitable for all construction types according to rules		OK	OK
EEL		105,7	105,7
Data for functional demonstration			
Rated heat power	kW	10	-
Fire wood volume	kg/h	3	5
Combustion performance	kW	13	22
Flue gas mass flow	g/s	12	21
Outlet temperature (before reheating surface)	°C	-	340
Flue gas temperature after:			
attached steel smoke hood	°C	210	246
1 x adjoining cast iron radiator (GNF 8/10)	°C	-	124
5 x accumulation rings MAS incl. cast iron hood MAS ³⁾	°C	-	210
2 m ceramic accumulator ⁴⁾	°C	-	180
1,4 m accumulation stones (MSS) ⁴⁾	°C	-	180
Necessary supply pressure	Pa	13	15
Combustion air consumption	m ³ /h	30	50
Combustion air connection Ø	mm	125	125
Heat distribution			
Insert / reheating surface	%	25 / 30	25 / 30
Glass pane (single / double)	%	45 / -	45 / -
Cross-section of gratings ⁵⁾			
Convection air	cm ²	500 / 100 / 300	500 / 100 / 300
Supply air	cm ²	500 / 100 / 300	500 / 100 / 300
Minimal oven surface for closed construction type			
Heat dissipating surface	m ²	4	4
Minimal distances of the fireplace			
to insulation layer	cm	6	6
to mounting floor	cm	15	15
Thermal insulation without / with air gratings ⁶⁾			
Mounting wall	cm	14 / 10	14 / 10
Floor	cm	2 / 2	2 / 2
Ceiling	cm	16 / 12	16 / 12
Brick lining for combustible wall	cm	10	10
Weight			
Fireplace / combustion chamber	kg	213 / 52	
Meets requirement/limit values for:			
Germany/ Austria / Suisse / Norway		1.BImSchV (Stufe 2) / 15a BVG (2015) / LRV / NS 3059	

- 1) Indications to "Rated power" determined with metallic reheating surface
- 2) Indications to "Storage operation" for the manual execution of the reheating surface (reference values for the specialist)
- 3) Damper flap recommended
- 4) Standard value or calculated functional proof required
- 5) for fireplace inserts / flue gas pipe / metallic reheating surface
- 6) Values determined with upper air sections; stove cladding is heat emitting

Dimension sheets - Architektur-Eck 38/86/36

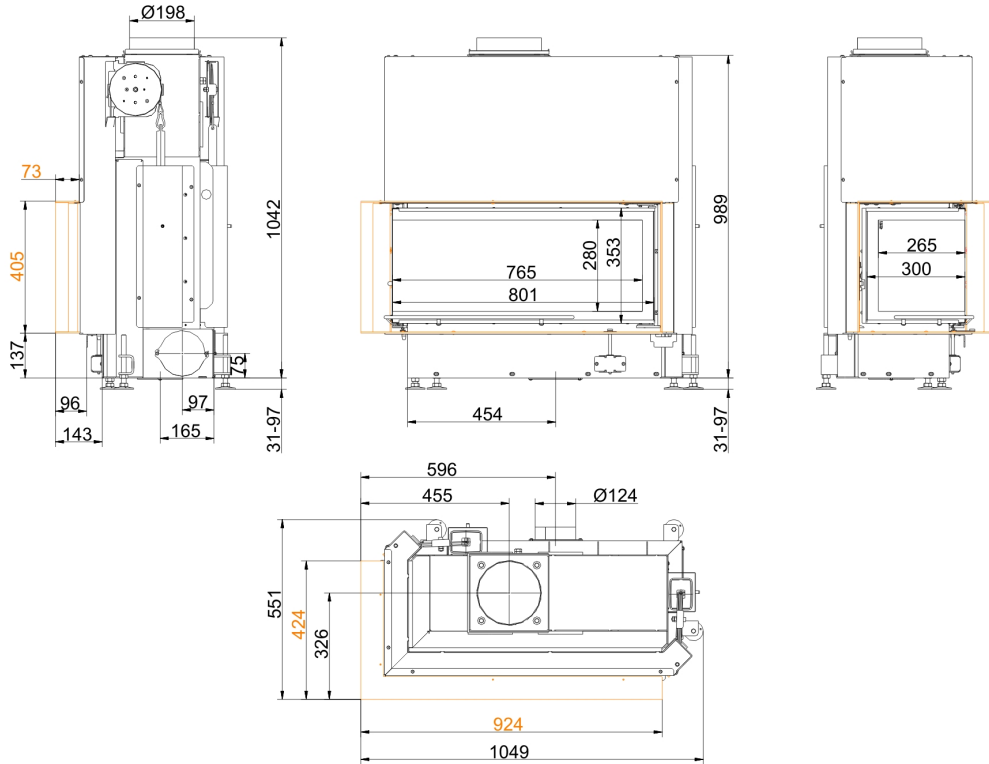


... links mit Anbaurahmen 50 mm

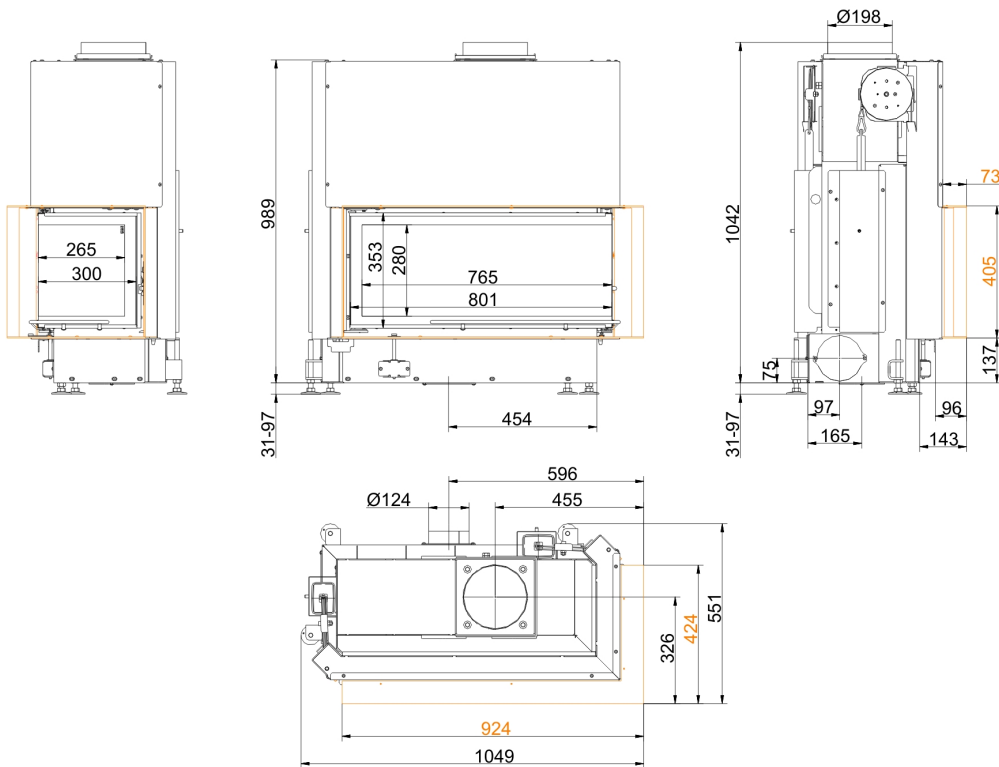


... rechts mit Anbaurahmen 50 mm

Dimension sheets - Architektur-Eck 38/86/36



... links mit Anbaurahmen 70 mm



... rechts mit Anbaurahmen 70 mm

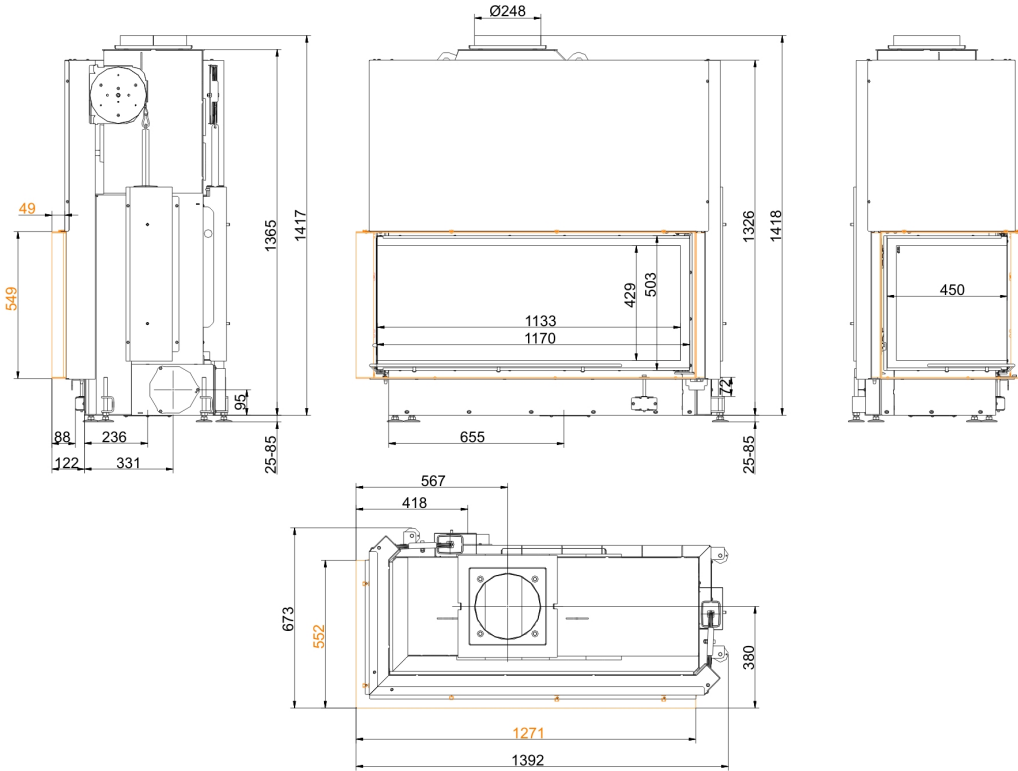
We suggest for CAD planning Palette CAD. Permanent updated drawings: www.brunner.de
 Frames /flue gas outlet connection/ combustion air supply connection/ front variants are marked in color.

Planning and installation - Architektur-Eck 38/86/36

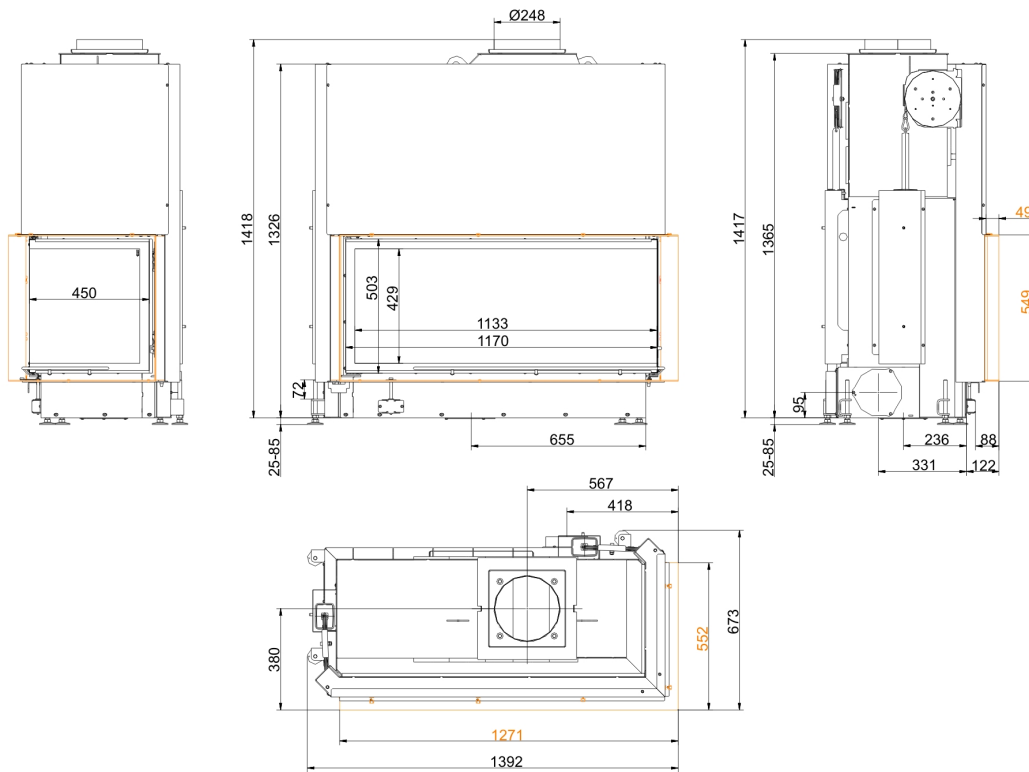
Tested according to		EN 13229 W
Values measured at		Nennleistung ¹⁾
Suitable for all construction types according to rules		OK
EEl		105,7
Data for functional demonstration		
Rated heat power	kW	10
Fire wood volume	kg/h	3,1
Combustion performance	kW	13,5
Flue gas mass flow	g/s	11
Outlet temperature (before reheating surface)	°C	375
Flue gas temperature after:		
attached steel smoke hood	°C	220
Necessary supply pressure	Pa	12
Combustion air consumption	m ³ /h	30
Combustion air connection Ø	mm	125
Heat distribution		
Insert / reheating surface	%	55 / -
Glass pane (single / double)	%	45 / -
Cross-section of gratings ²⁾		
Convection air	cm ²	800 / 100 / -
Supply air	cm ²	800 / 100 / -
Minimal oven surface for closed construction type		
Heat dissipating surface	m ²	4
Minimal distances of the fireplace		
to insulation layer	cm	6
to mounting floor	cm	2
Thermal insulation without / with air gratings ³⁾		
Mounting wall	cm	16 / 12
Floor	cm	2 / 2
Ceiling	cm	28 / 20
Brick lining for combustible wall	cm	10
Weight		
Fireplace / combustion chamber	kg	185 / 45
Meets requirement/limit values for:		
Germany/ Austria / Suisse / Norway		1.BImSchV (Stufe 2) / 15a BVG (2015) / LRV / NS 3059

- 1) Indications to "Rated power" determined with metallic reheating surface
 2) for fireplace inserts / flue gas pipe / metallic reheating surface
 3) Values determined with upper air sections; stove cladding is heat emitting

Dimension sheets - Architektur-Eck 53/121/50

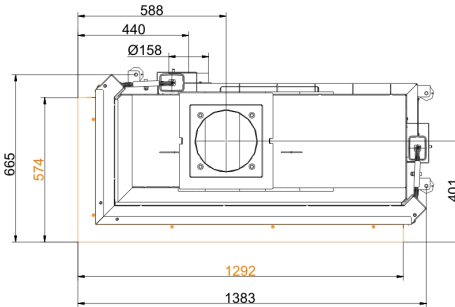
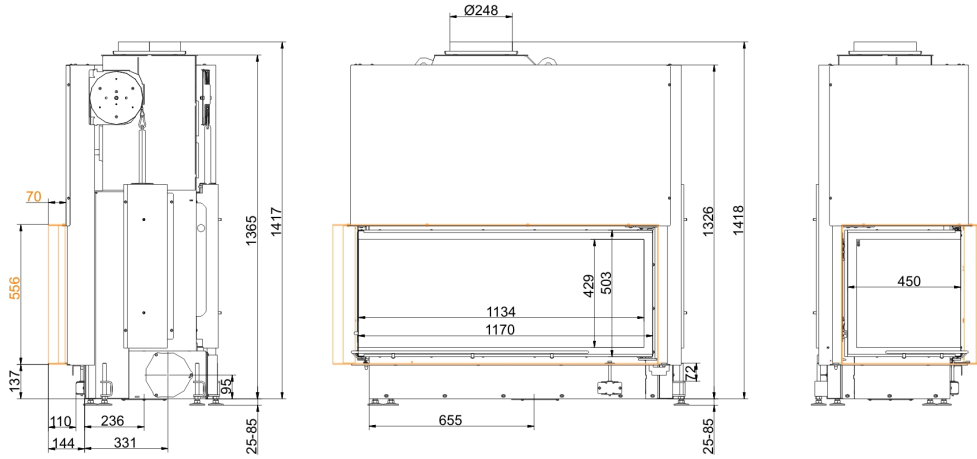


... links mit Anbaurahmen 50 mm

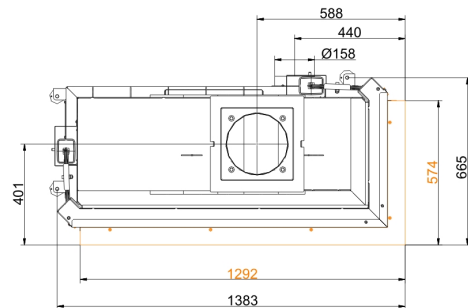
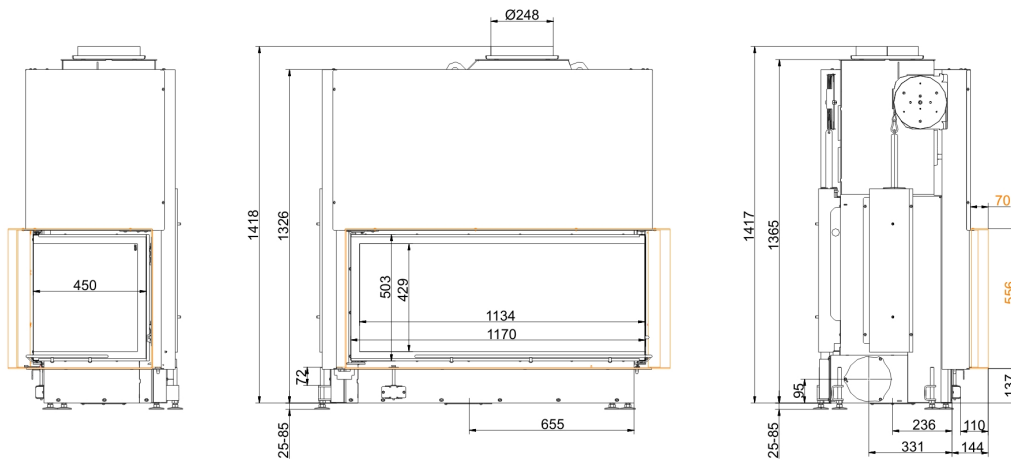


... rechts mit Anbaurahmen 50 mm

Dimension sheets - Architektur-Eck 53/121/50



... links mit Anbaurahmen 70 mm



... rechts mit Anbaurahmen 70 mm

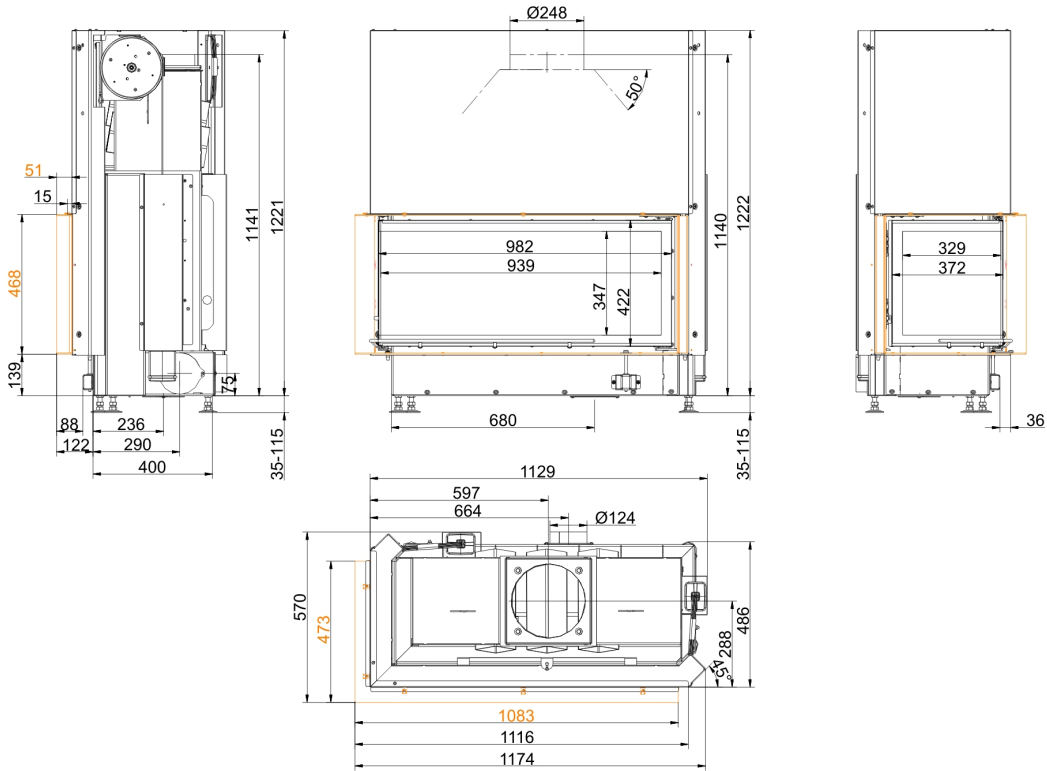
We suggest for CAD planning Palette CAD. Permanent updated drawings: www.brunner.de
 Frames /flue gas outlet connection/ combustion air supply connection/ front variants are marked in color.

Planning and installation - Architektur-Eck 53/121/50

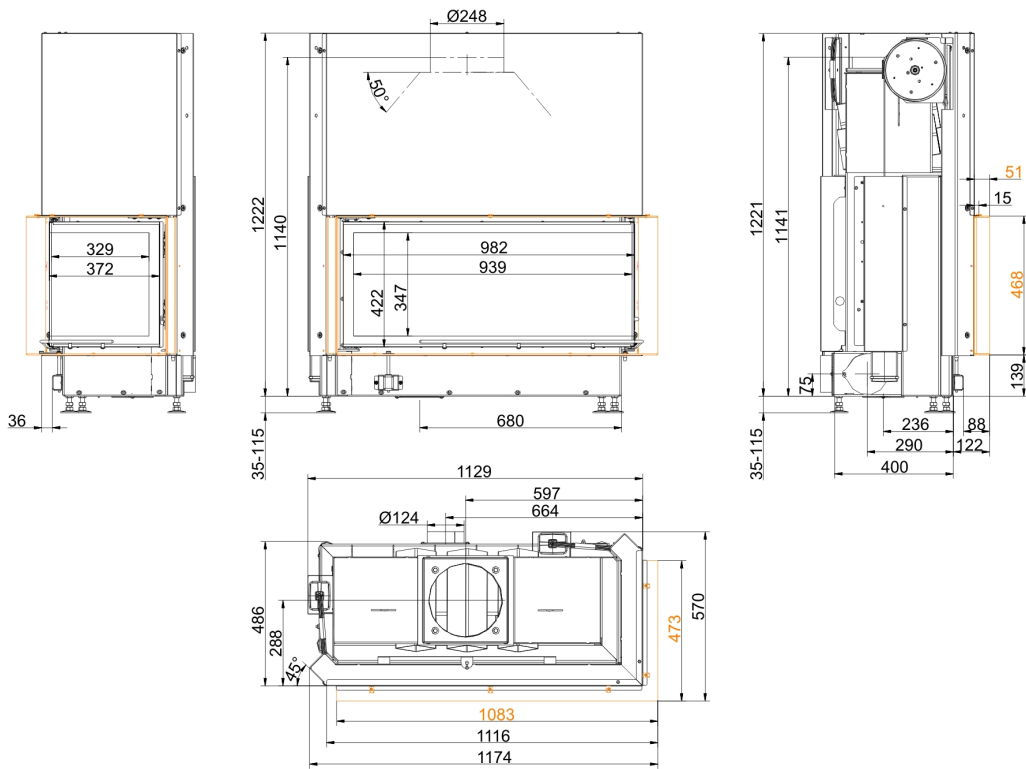
Tested according to		EN 13229 W	EN 13229 W
Values measured at		Nennleistung ¹⁾	offen
Suitable for all construction types according to rules		OK	OK
EEL		102,9	102,9
Data for functional demonstration			
Rated heat power	kW	14,5	-
Fire wood volume	kg/h	4,3	4,3
Combustion performance	kW	18	18
Flue gas mass flow	g/s	18	120
Flue gas temperature after:			
attached steel smoke hood	°C	190	105
Necessary supply pressure	Pa	12	6
Combustion air consumption	m ³ /h	60	250
Combustion air connection Ø	mm	160	-
Heat distribution			
Insert / reheating surface	%	55 / -	-
Glass pane (single / double)	%	45 / -	-
Cross-section of gratings ²⁾			
Convection air	cm ²	1100 / 100 / -	-
Supply air	cm ²	1100 / 100 / -	-
Minimal oven surface for closed construction type			
Heat dissipating surface	m ²	6,4	-
Minimal distances of the fireplace			
to insulation layer	cm	6	6
to mounting floor	cm	2	2
Thermal insulation without / with air gratings ³⁾			
Mounting wall	cm	16 / 12	16 / 12
Floor	cm	4 / 4	4 / 4
Ceiling	cm	22 / 16	22 / 16
Brick lining for combustible wall	cm	10	10
Weight			
Fireplace / combustion chamber	kg	318 / 103	
Meets requirement/limit values for:			
Germany/ Austria / Suisse / Norway		1.BImSchV (Stufe 2) / 15a BVG (2015) / LRV / NS 3059	

- 1) Indications to "Rated power" determined with metallic reheating surface
2) for fireplace inserts / flue gas pipe / metallic reheating surface
3) Values determined with upper air sections; stove cladding is heat emitting

Dimension sheets - Architektur-Eck 45/101/40

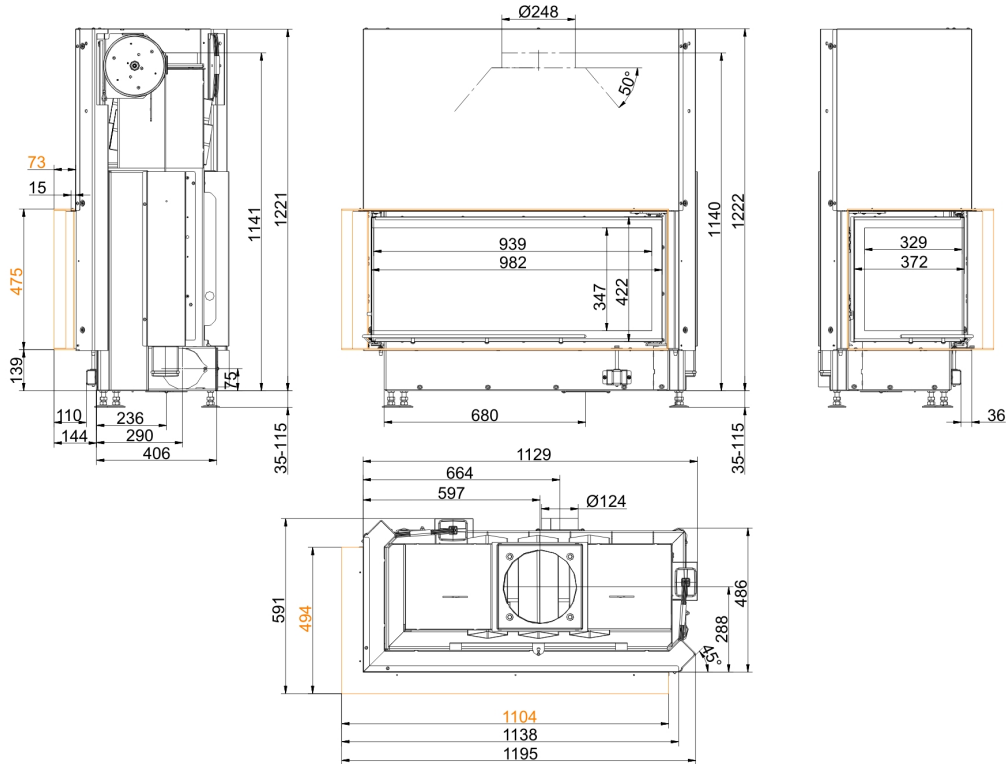


... links mit Anbaurahmen 50 mm

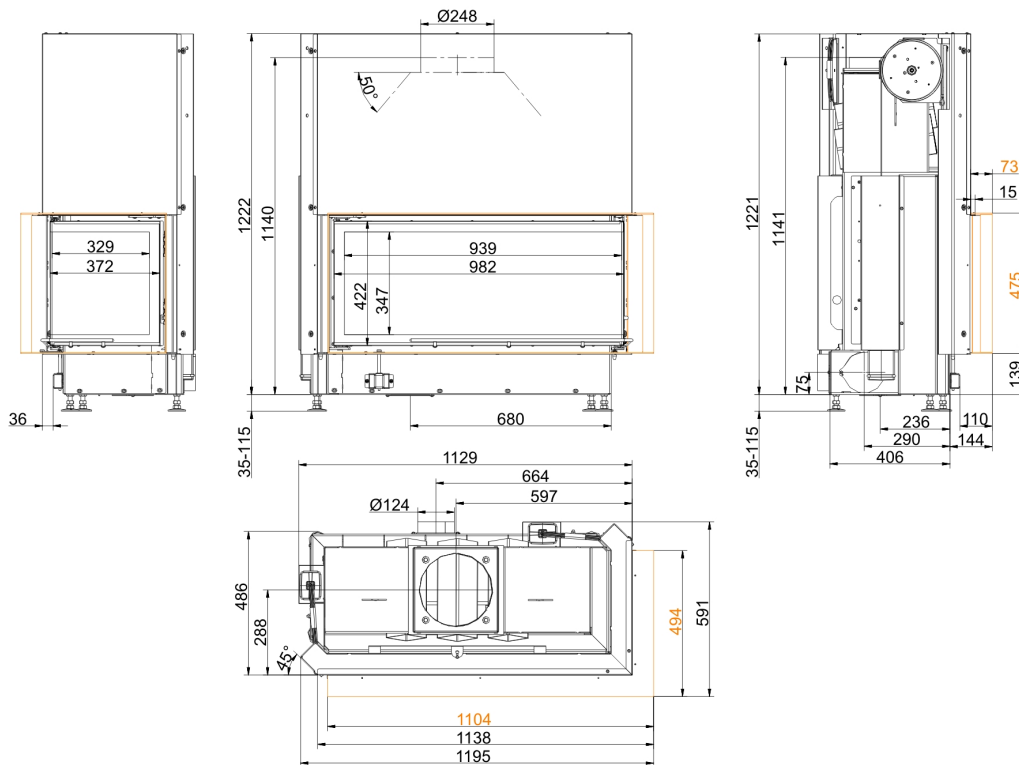


... rechts mit Anbaurahmen 50 mm

Dimension sheets - Architektur-Eck 45/101/40



... links mit Anbaurahmen 70 mm



... rechts mit Anbaurahmen 70 mm

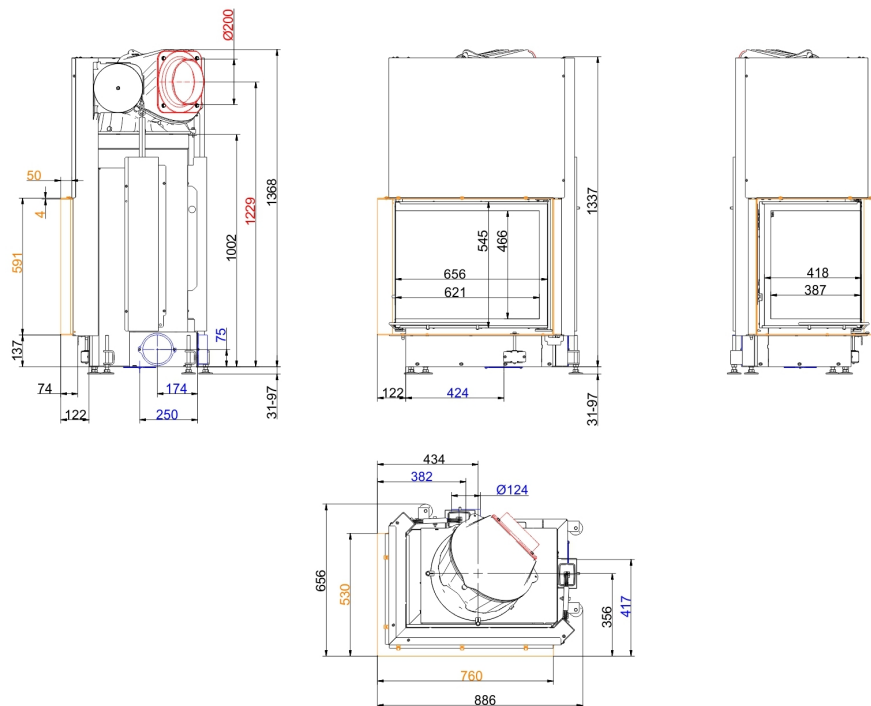
We suggest for CAD planning Palette CAD. Permanent updated drawings: www.brunner.de
 Frames /flue gas outlet connection/ combustion air supply connection/ front variants are marked in color.

Planning and installation - Architektur-Eck 45/101/40

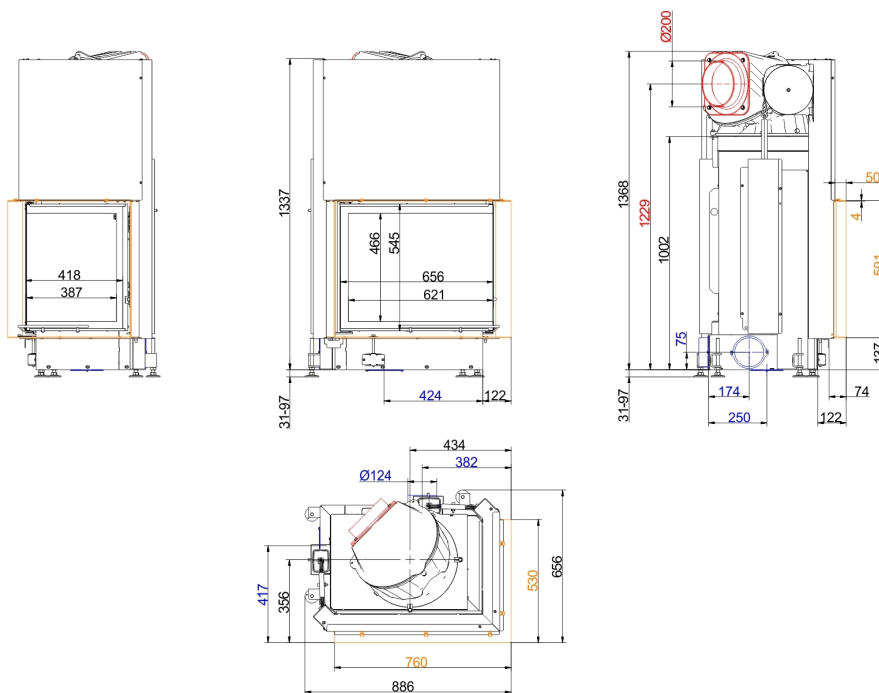
Tested according to		EN 13229 W	EN 13229 W
Values measured at		Nennleistung ¹⁾	offen
Suitable for all construction types according to rules		OK	OK
EEL		102,9	102,9
Data for functional demonstration			
Rated heat power	kW	14,5	-
Fire wood volume	kg/h	4,3	4,3
Combustion performance	kW	18	18
Flue gas mass flow	g/s	18	120
Flue gas temperature after:			
attached steel smoke hood	°C	190	105
Necessary supply pressure	Pa	12	6
Combustion air consumption	m ³ /h	60	250
Combustion air connection Ø	mm	125	-
Heat distribution			
Insert / reheating surface	%	55 / -	-
Glass pane (single / double)	%	45 / -	-
Cross-section of gratings ²⁾			
Convection air	cm ²	1000 / 100 / -	-
Supply air	cm ²	1000 / 100 / -	-
Minimal oven surface for closed construction type			
Heat dissipating surface	m ²	6,4	-
Minimal distances of the fireplace			
to insulation layer	cm	6	6
to mounting floor	cm	2	2
Thermal insulation without / with air gratings ³⁾			
Mounting wall	cm	16 / 12	16 / 12
Floor	cm	4 / 2	4 / 2
Ceiling	cm	22 / 16	22 / 16
Brick lining for combustible wall	cm	10	10
Weight			
Fireplace / combustion chamber	kg	240 / 73	
Meets requirement/limit values for:			
Germany/ Austria / Suisse / Norway		1.BImSchV (Stufe 2) / - / - / NS 3059	

- 1) Indications to "Rated power" determined with metallic reheating surface
2) for fireplace inserts / flue gas pipe / metallic reheating surface
3) Values determined with upper air sections; stove cladding is heat emitting

Dimension sheets - Eck-Kamin 57/67/44 lifting door (easy-lift)

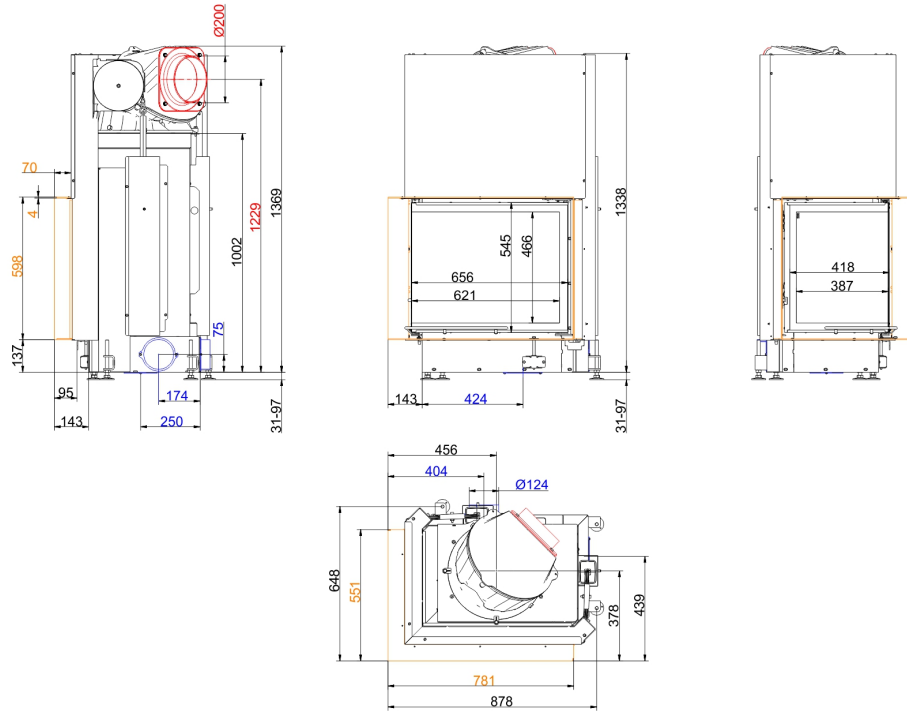


... links mit Anbaurahmen 50 mm und Warmlufthaube Guss

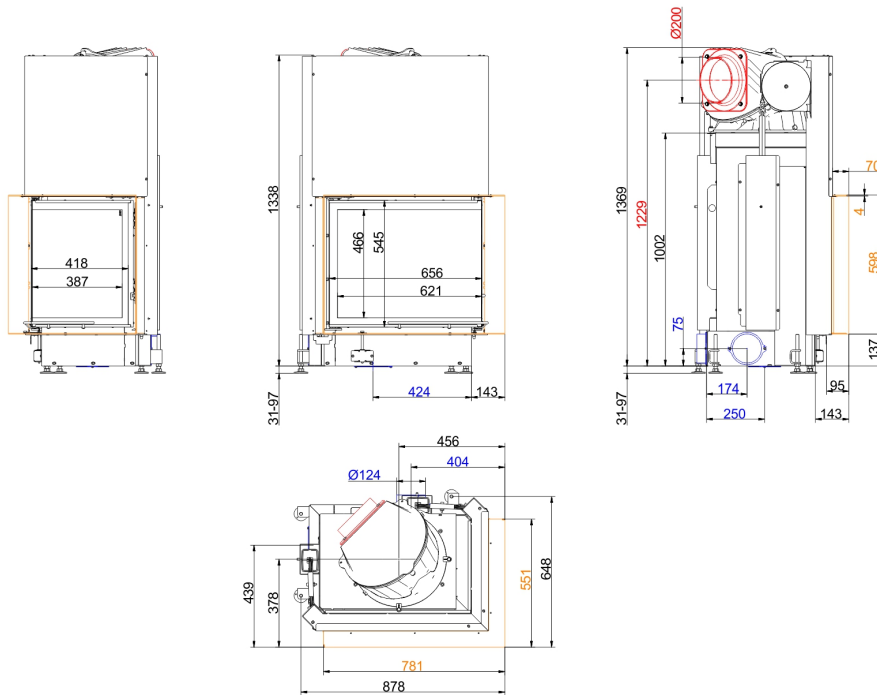


... rechts mit Anbaurahmen 50 mm und Warmlufthaube Guss

Dimension sheets - Eck-Kamin 57/67/44 lifting door (easy-lift)

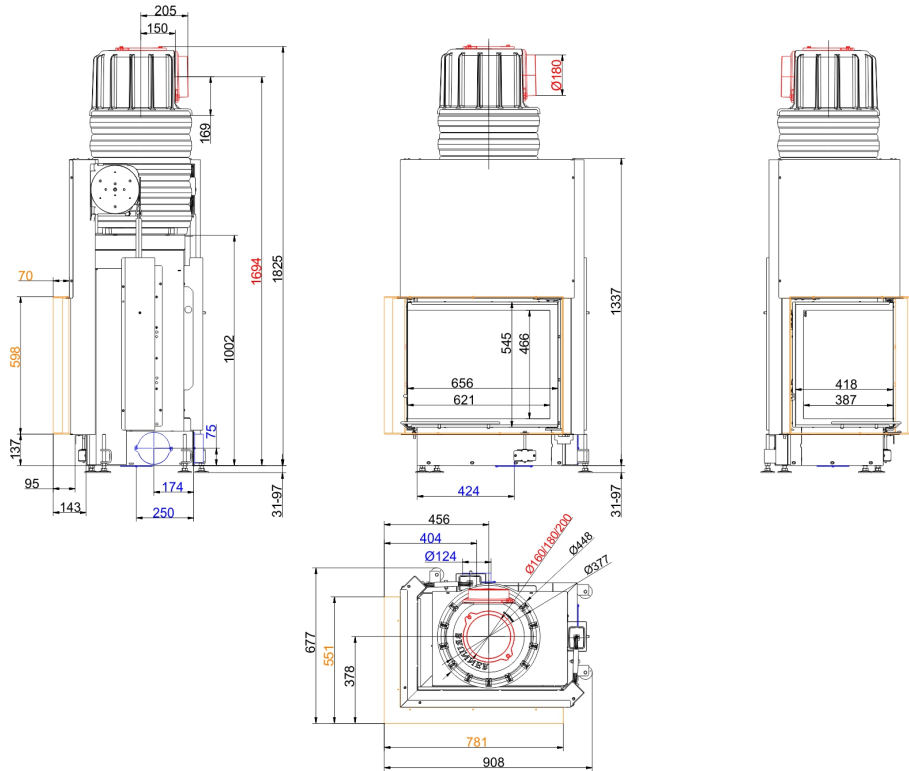


... links mit Anbaurahmen 70 mm und Warmlufthaube Guss

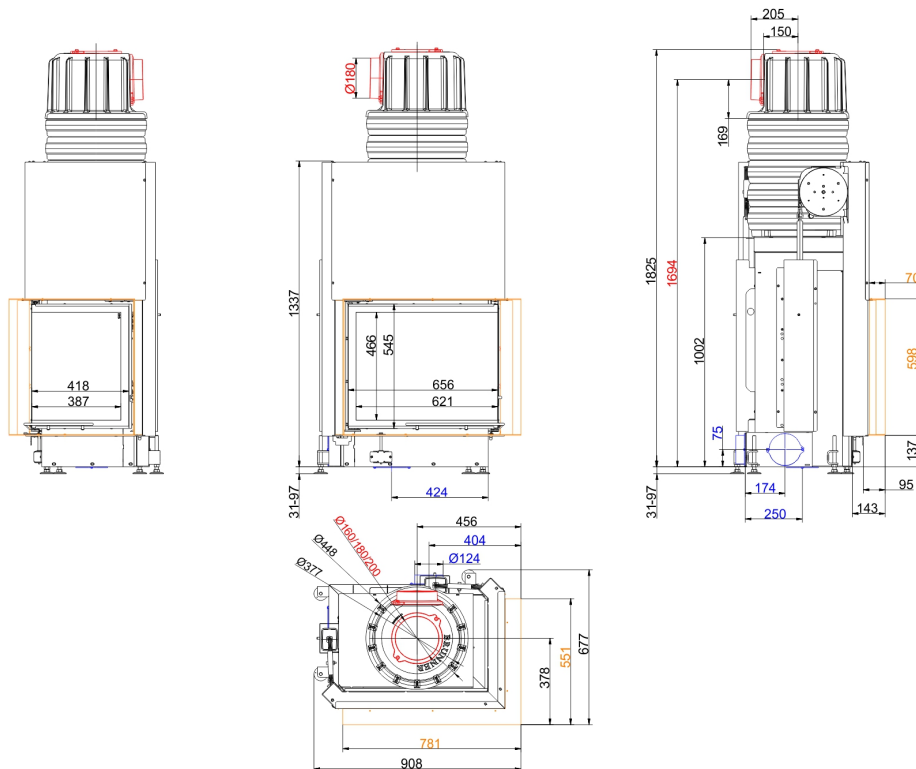


... rechts mit Anbaurahmen 70 mm und Warmlufthaube Guss

Dimension sheets - Eck-Kamin 57/67/44 lifting door (easy-lift)



... links mit Anbaurahmen 70 mm und MAS



... rechts mit Anbaurahmen 70 mm und MAS

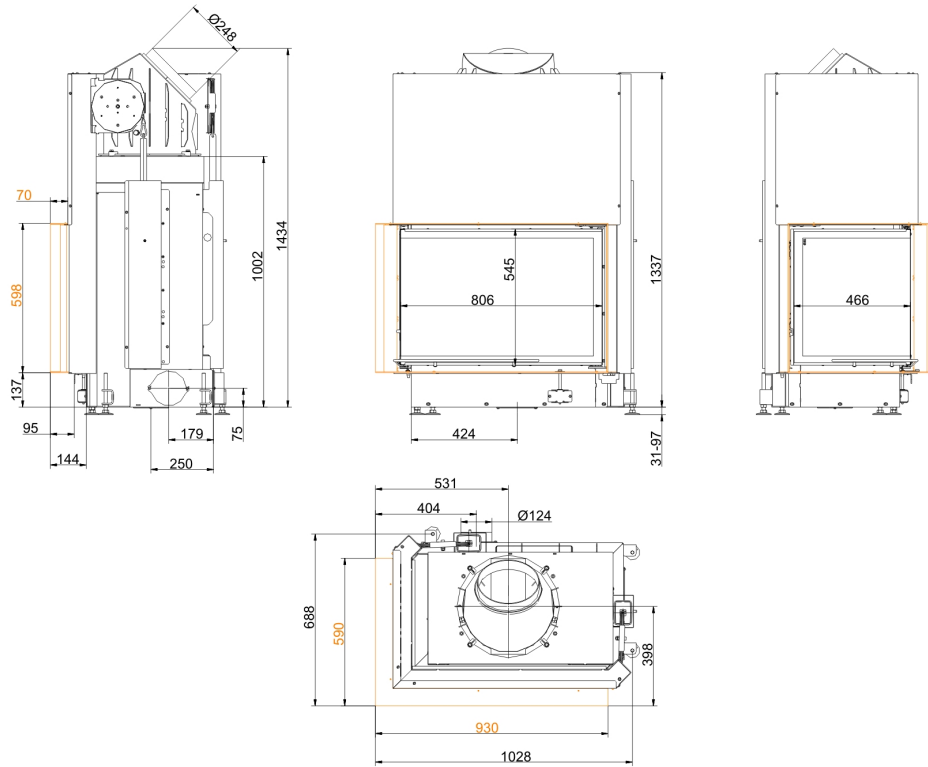
We suggest for CAD planning Palette CAD. Permanent updated drawings: www.brunner.de
 Frames /flue gas outlet connection/ combustion air supply connection/ front variants are marked in color.

Planning and installation - Eck-Kamin 57/67/44 lifting door (easy-lift)

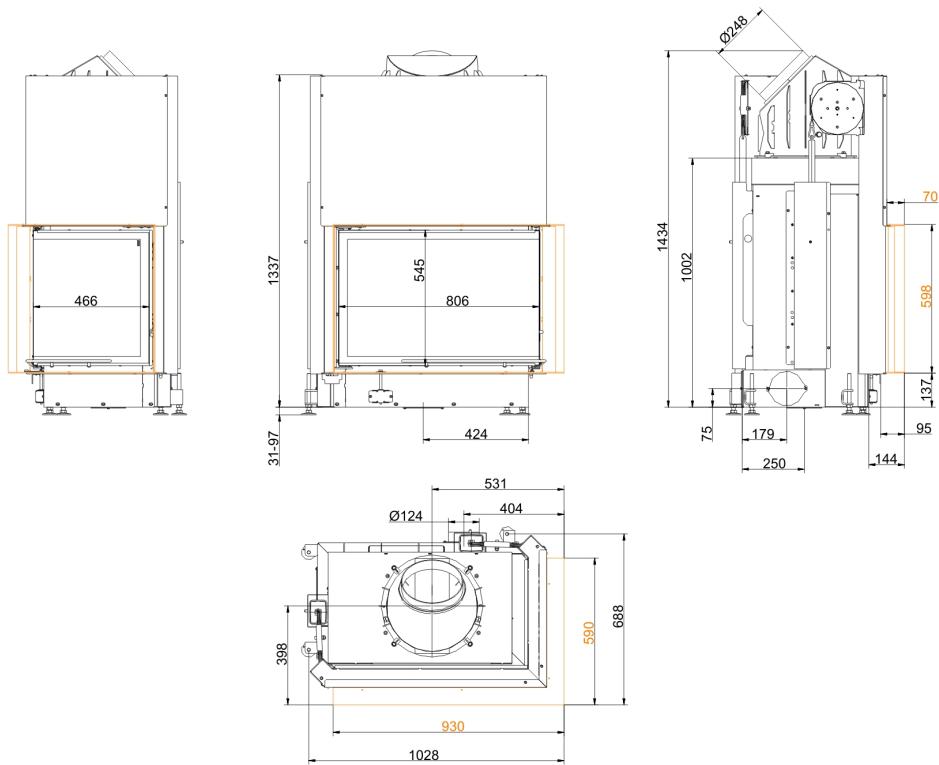
Tested according to		EN 13229 W	EN 13229 WA
Values measured at		Nennleistung ¹⁾	Storage operation ²⁾
Suitable for all construction types according to rules		OK	OK
EEL		105,7	105,7
Data for functional demonstration			
Rated heat power	kW	11	-
Fire wood volume	kg/h	3,2	5
Combustion performance	kW	14	22
Flue gas mass flow	g/s	13	19
Outlet temperature (before reheating surface)	°C	-	330
Flue gas temperature after:			
cast iron hot air hood	°C	225	255
1 x adjoining cast iron radiator (GNF 8/10)	°C	-	151
5 x accumulation rings MAS incl. cast iron hood MAS ³⁾	°C	-	220
2 m ceramic accumulator	°C	-	180
1,4 m accumulation stones (MSS) ⁴⁾	°C	-	180
Necessary supply pressure	Pa	13	15
Combustion air consumption	m ³ /h	32	50
Combustion air connection Ø	mm	125	125
Heat distribution			
Insert / reheating surface	%	25 / 30	25 / 30
Glass pane (single / double)	%	45 / -	45 / -
Cross-section of gratings ⁵⁾			
Convection air	cm ²	650 / 100 / 350	650 / 100 / 350
Supply air	cm ²	650 / 100 / 350	650 / 100 / 350
Minimal oven surface for closed construction type			
Heat dissipating surface	m ²	4,5	4,5
Minimal distances of the fireplace			
to insulation layer	cm	6	6
to mounting floor	cm	15	15
Thermal insulation without / with air gratings ⁶⁾			
Mounting wall	cm	14 / 10	14 / 10
Floor	cm	2 / 2	2 / 2
Ceiling	cm	19 / 14	19 / 14
Brick lining for combustible wall	cm	10	10
Weight			
Fireplace / combustion chamber	kg	213 / 66 / -	
Meets requirement/limit values for:			
Germany/ Austria / Suisse / Norway		1.BImSchV (Stufe 2) / 15a BVG (2015) / LRV / NS 3059	

- 1) Indications to "Rated power" determined with metallic reheating surface
- 2) Indications to "Storage operation" for the manual execution of the reheating surface (reference values for the specialist)
- 3) Damper flap recommended
- 4) Standard value or calculated functional proof required
- 5) for fireplace inserts / flue gas pipe / metallic reheating surface
- 6) Values determined with upper air sections; stove cladding is heat emitting

Dimension sheets - Eck-Kamin 57/82/48 lifting door (easy-lift)



... links mit Anbaurahmen 70 mm



... rechts mit Anbaurahmen 70 mm

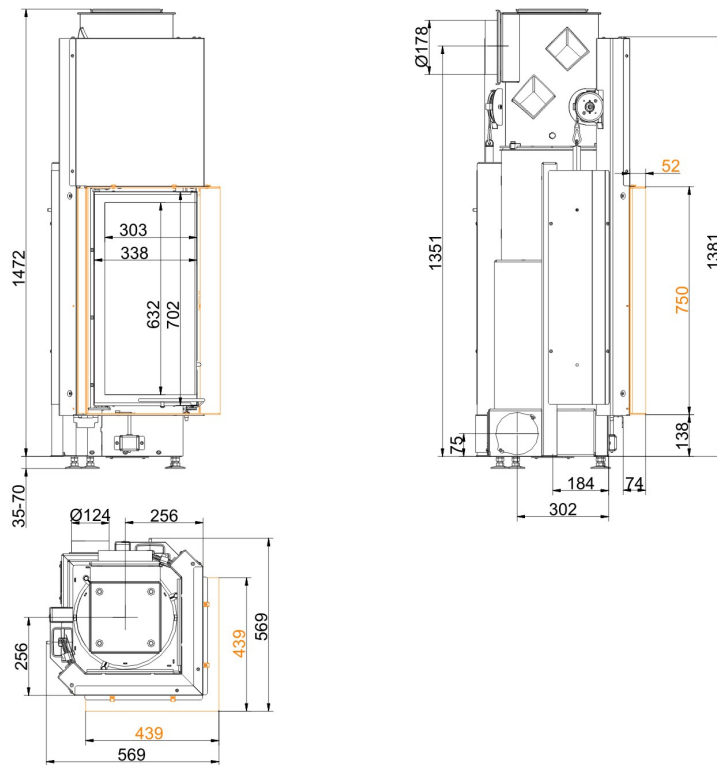
We suggest for CAD planning Palette CAD. Permanent updated drawings: www.brunner.de
 Frames /flue gas outlet connection/ combustion air supply connection/ front variants are marked in color.

Planning and installation - Eck-Kamin 57/82/48 lifting door (easy-lift)

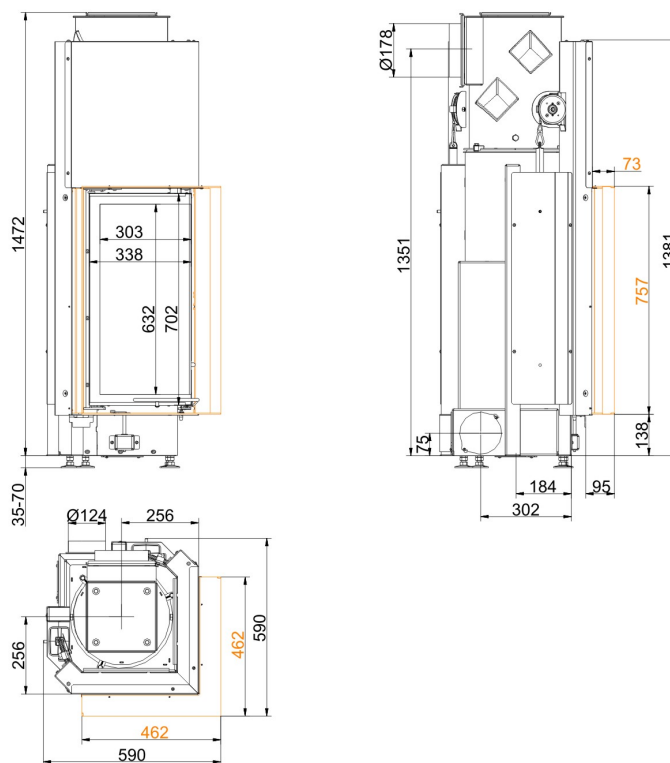
Tested according to		EN 13229 W	EN 13229 WA
Values measured at		Nennleistung ¹⁾	Storage operation ²⁾
Suitable for all construction types according to rules		OK	OK
EEL		105,7	105,7
Data for functional demonstration			
Rated heat power	kW	12	-
Fire wood volume	kg/h	3,6	5
Combustion performance	kW	16	22
Flue gas mass flow	g/s	11	19
Outlet temperature (before reheating surface)	°C	-	325
Flue gas temperature after:			
attached steel smoke hood	°C	195	260
1 x adjoining cast iron radiator (GNF 8/10)	°C	-	142
6 x accumulation rings (MAS) ³⁾	°C	-	200
2 m ceramic accumulator ⁴⁾	°C	-	180
1,4 m accumulation stones (MSS) ⁴⁾	°C	-	180
Necessary supply pressure	Pa	12	15
Combustion air consumption	m ³ /h	32	50
Combustion air connection Ø	mm	125	125
Heat distribution			
Insert / reheating surface	%	25 / 30	25 / 30
Glass pane (single / double)	%	45 / -	45 / -
Cross-section of gratings ⁵⁾			
Convection air	cm ²	700 / 100 / 400	700 / 100 / 400
Supply air	cm ²	700 / 100 / 400	700 / 100 / 400
Minimal oven surface for closed construction type			
Heat dissipating surface	m ²	5	5
Minimal distances of the fireplace			
to insulation layer	cm	6	6
to mounting floor	cm	15	15
Thermal insulation without / with air gratings ⁶⁾			
Mounting wall	cm	14 / 10	14 / 10
Floor	cm	2 / 2	2 / 2
Ceiling	cm	19 / 14	19 / 14
Brick lining for combustible wall	cm	10	10
Weight			
Fireplace / combustion chamber	kg	255 / 82 / -	
Meets requirement/limit values for:			
Germany/ Austria / Suisse / Norway		1.BImSchV (Stufe 2) / 15a BVG (2015) / LRV / NS 3059	

- 1) Indications to "Rated power" determined with metallic reheating surface
- 2) Indications to "Storage operation" for the manual execution of the reheating surface (reference values for the specialist)
- 3) Damper flap recommended
- 4) Standard value or calculated functional proof required
- 5) for fireplace inserts / flue gas pipe / metallic reheating surface
- 6) Values determined with upper air sections; stove cladding is heat emitting

Dimension sheets - Eck-Kamin 70/33/33 lifting door (easy-lift)



... mit Anbaurahmen 50 mm



... mit Anbaurahmen 70 mm

We suggest for CAD planning Palette CAD. Permanent updated drawings: www.brunner.de
 Frames /flue gas outlet connection/ combustion air supply connection/ front variants are marked in color.

Planning and installation - Eck-Kamin 70/33/33 lifting door (easy-lift)

Tested according to		EN 13229 W
Values measured at		Nennleistung ¹⁾
Suitable for all construction types according to rules		OK
EEI		108,5
Data for functional demonstration		
Rated heat power	kW	9
Fire wood volume	kg/h	2,9
Combustion performance	kW	12
Flue gas mass flow	g/s	9
Flue gas temperature after:		
Stahlhaube / Warmlufthaube Guss	°C	210
Necessary supply pressure	Pa	13
Combustion air consumption	m ³ /h	28
Combustion air connection Ø	mm	125
Heat distribution		
Insert / reheating surface	%	25 / 30
Glass pane (single / double)	%	45 / -
Cross-section of gratings ²⁾		
Convection air	cm ²	400 / 100 / 200
Supply air	cm ²	400 / 100 / 200
Minimal oven surface for closed construction type		
Heat dissipating surface	m ²	3,5
Minimal distances of the fireplace		
to insulation layer	cm	6
to mounting floor	cm	4
Thermal insulation without / with air gratings ³⁾		
Mounting wall	cm	8 / 6
Floor	cm	0 / 0
Ceiling	cm	19 / 15
Brick lining for combustible wall	cm	10
Weight		
Fireplace / combustion chamber	kg	171 / 42
Meets requirement/limit values for:		
Germany/ Austria / Suisse / Norway		1.BImSchV (Stufe 2) / 15a BVG (2015) / LRV / NS 3059

- 1) Indications to "Rated power" determined with metallic reheating surface
- 2) for fireplace inserts / flue gas pipe / metallic reheating surface
- 3) Values determined with upper air sections; stove cladding is heat emitting

Ulrich Brunner GmbH

Zellhuber Ring 17-18

D-84307 Eggenfelden

Tel.: +49 (0) 8721/771-0

Fax: +49 (0) 8721/771-100

Email: info@brunner.de

Актуальная информация: www.brunner.de

Art.Nr.: 200005